

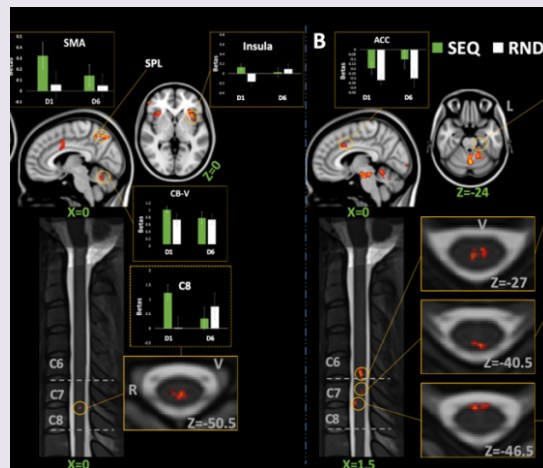


UNIVERSITY OF
BIRMINGHAM

CENTRE OF PRECISION
REHABILITATION FOR
SPINAL PAIN



Contribution of the spinal cord to long-term motor learning



We recently published a study on the interaction between the brain and spinal cord in long-term motor learning in humans. We used MRI to simultaneously scan the brain and spinal cord and participants completed a 4-day visuospatial motor sequence training with pre and post-training assessments. Read more about our study here...

[READ MORE](#)



Awards: Professor Deborah Falla

Professor Deborah Falla was awarded Fellow of the International Society of Electrophysiology and Kinesiology (ISEK) at the XXIV Congress of the Society.

[READ MORE](#)



New Team Members: Dr Janet Deane

Dr Janet Deane has recently been appointed as an Associate Professor of Rehabilitation Science and Physiotherapy at the School of Sport, Exercise and Rehabilitation Sciences

[READ MORE](#)

This newsletter is prepared by the Centre of Precision Rehabilitation for Spinal Pain (CPR Spine). If you would like to unsubscribe, please send an email with "newsletter unsubscribe" in the subject to cpr.spine@contacts.bham.ac.uk.

To find out how we will use any personal data you share with us, please read our [privacy statements](#).