

Policy Innovate

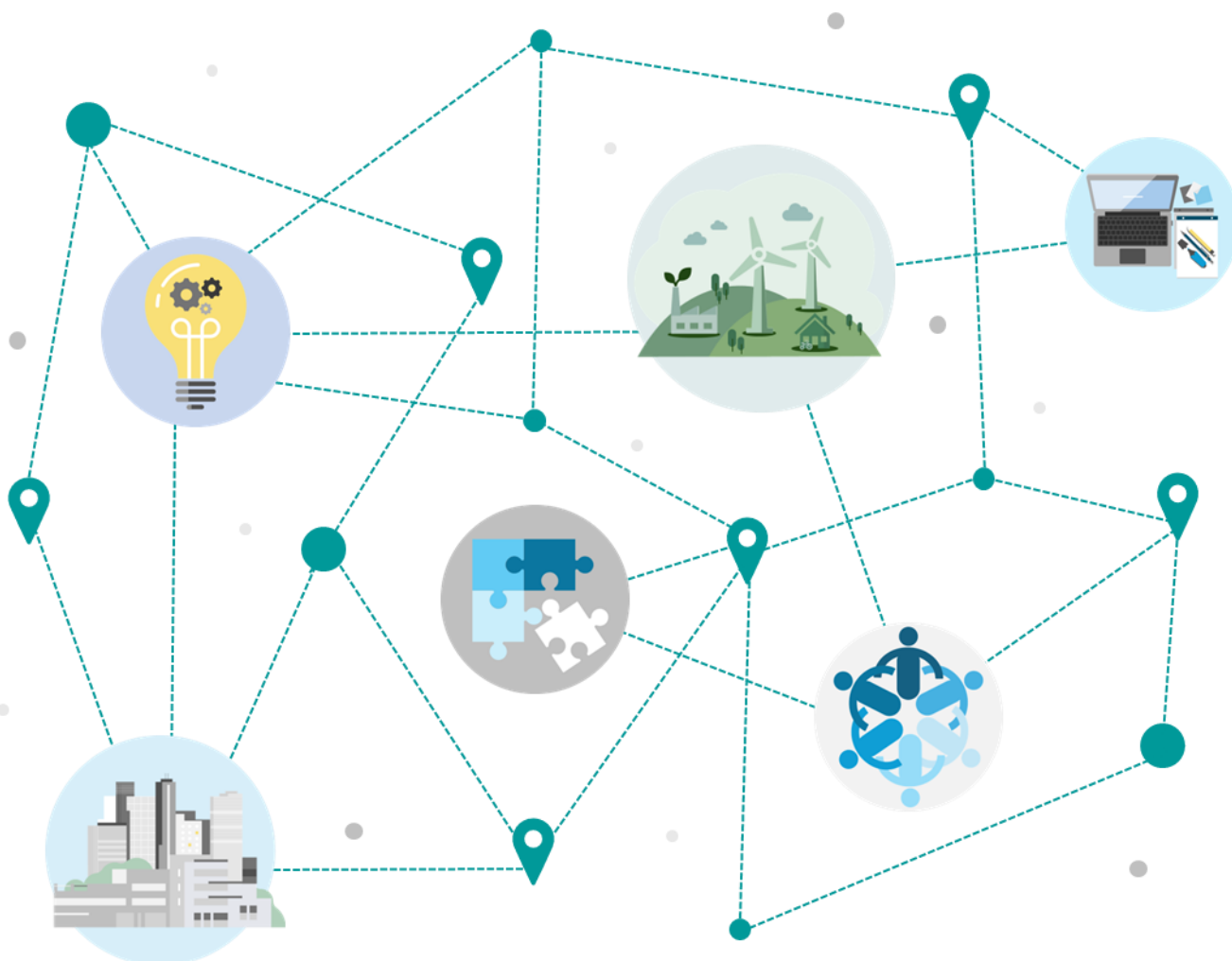
Your guide to local partnership perspectives

LPIP
HUB

Issue No. 3 | Date 30/04/2025

The Local Policy Innovation Partnership (LPIP) Hub seeks to address nationwide issues through local partnership and place. The LPIP Hub programme has been designed to support local and national policymakers in tackling place-based challenges, driving sustainable and inclusive economic growth and reducing regional disparities in the UK.

Policy Innovate aims to pull together and disseminate the work of the LPIP programme and wider relevant research. With the aim of providing evidence around building confidence, capacity and capability in an effective service-driven approach to place-based policy making and public service delivery.



Contents

Yorkshire and Humber Policy Innovation Partnership (YPIP)	3
Rural Wales Local Policy Innovation Partnership.....	4
EPIC Futures NI.....	5
FORTH20	6
Living and Working More Sustainably in a Greener Economy – Evidence Review.....	7
LPIP Blogs.....	11
Research and Reports	12
Events	16

Yorkshire and Humber Policy Innovation Partnership (YPIP)

YPIP

The Yorkshire and Humber Policy Innovation Partnership (YPIP) will build structures and processes with an overarching focus of empowering low-income, marginalised and spatially isolated communities in their places.

Led by [Professor Gary Dymski](#) at the [University of Leeds](#), the partnership will provide evidence for vital decision-making in the Yorkshire and Humber region to deliver on climate change, inequalities and data gaps.

Building on existing partnerships across sectors, the work will involve:

- Yorkshire Universities: Leeds Arts University, Leeds Beckett University, Leeds Conservatoire, Leeds Trinity University, Sheffield Hallam University, York St Johns University, and the Universities of Bradford, Huddersfield, Hull, Leeds, Sheffield and York.
- Yorkshire and Humber Councils
- Yorkshire & Humber Policy Engagement and Research Network (Y-PERN)
- Yorkshire and Humber Climate Commission
- Yorkshire Asian Business Association
- National Institute for Health Research Applied Research Collaboration: Yorkshire and Humber.

YPIP's activities are being built around a 'communities in their places' cross-cutting theme, which reflects the project's commitment to being sure that the voices of all policy-stakeholders in the region are heard. YPIP's substantive work in addressing specific problems in the region is split into three strands:

- **Data analytics:** Build the Yorkshire Engagement Portal – a data hub for the region, with a triple aim: providing up-to-date, legitimate evidence about the region's economic, social and environmental status; facilitating the use of these data in policy debates and decision-making by all members of the region's communities; and enabling community-led data initiatives.
- **Inclusive growth:** Use inclusive business practices to increase entrepreneurial opportunities in the region, with a special focus on creating an Inclusive Business Network and improving creative opportunities for young people in Bradford.
- **Sustainable living:** Address key regional challenges in the move to net zero carbon, including retrofit guidance for the region's high proportion of older buildings and close collaboration with the Yorkshire and Humber Climate Commission.

YPIP is rooted in a commitment to empowering communities, by researching 'with' rather than 'on' people. At its heart will be the YPIP community panel – comprised of 12 members with diverse experiences of disadvantage, marginalisation or isolation – who will become equal decision-makers with key policymakers and researchers in the region.

[Read more about YPIP on the University of Leeds website.](#)

Rural Wales Local Policy Innovation Partnership

Cymru Wledig LPIP Rural Wales

Partneraieth Polisi ac Arloesi Lleol Cymru Wledig

The Rural Wales Local Policy and Innovation Partnership (RWLPIP) brings together researchers, stakeholders and communities to generate, share and apply evidence to enhance local policy and innovation for inclusive, sustainable growth in Rural Wales. It aims to realise the vision of a ‘wellbeing economy’ that prioritises an economy designed to deliver social justice for current and future generations on a healthy planet in which citizens are actively engaged in their communities. The vision is approached through four themes: ‘Building a Regenerative Economy’, ‘Supporting the Net Zero Transition’, ‘Enhancing Wellbeing in Place’ and ‘Empowering Communities for Cultural Recovery’.

To achieve this aim, the RWLPIP work programme involves several parallel streams that collectively will expand the evidence base for policy and strengthen the capacities of communities and local and regional institutions to find innovative solutions to challenges faced by the region. The work streams include:

- Innovation Labs – focused on overcoming obstacles to change.
- Community Action Research – involving communities in research on local problems.
- Responsive Research, Surveys, and Data Synergy, Analysis and Mapping – to address evidence gaps and create an Online Integrated Data Hub.
- Knowledge Exchange and Capacity Building – to enable diverse groups in Rural Wales to benefit from RWLPIP’s work.

Key Partners

Full members of the partnership:

- Aberystwyth University
- Bangor University
- Cardiff University
- Countryside and Community Research Institute, University of Gloucestershire
- Antur Cymru
- Centre for Alternative Technology
- Datblygiadau Egni Gwledig (DEG)
- Represent Us Rural
- Rural Health and Care Wales
- Sgema Cyf
- Together for Change

Strategic partners:

- Ambition North Wales
- Growing Mid Wales
- Natural Resources Wales
- One Voice Wales
- Powys Association of Voluntary Organisations
- Welsh Local Government Association

Contact

Professor [Michael Woods](#), Department of Geography and Earth Sciences at Aberystwyth University
– LPIP@aber.ac.uk

EPIC Futures NI

Epic Futures

EPIC Futures NI stands for: Economic and social partnering for inclusive innovation and collaboration (EPIC), which contribute towards a prosperous and sustainable future for Northern Ireland (NI).

Northern Ireland (NI) faces many unique contextual challenges. A key strategic challenge is the high levels of economic inactivity, the highest across all UK regions.

NI's future growth and prosperity rely heavily upon the ability to reactivate individuals to participate in the labour market. Such individuals have been referred to as the '*hidden unemployed*'. Economic inactivity has many social and economic effects on a region and, therefore, is a significant cross-departmental challenge.

However, NI's inherent political and structural nuances have challenged collaborative working. The key purpose of the '*EPIC Future NI*' hub is to support NI stakeholders and communities to work collaboratively and holistically to develop policy and programmes which support the '*hidden unemployed*'.

The hub has the following aims:

1. to fill research gaps and understanding of skills and employability in NI, holistically and at sub-regional levels;
2. to analyse trends and behaviours in the current and future labour market in NI;
3. to collaboratively identify, and co-create, evidence-based interventions and develop policy recommendations which aid NI's skills and employability challenges; and
4. to facilitate partnership building and collaborative working towards shared goals designed to alleviate economic inactivity and improving economic and social prosperity across NI.

Key partners

Lead partner/Director:

Ulster University (Principal Investigator/Hub Director – Professor Kristel Miller)

Co-directors:

- Ulster University Economic Policy Centre (Mr Mark Magill, Principal Economist)
- Department for Communities (Ms Deirdre Ward, Director of Work and Wellbeing)
- Department of Finance (Ms Rachel Singleton)

Co-investigators/Partners:

- Queen's University Belfast
- Disability Action
- Business in the Community Northern Ireland
- Women's Resource Development Agency
- WomensTech
- Centre for Cross-Border Studies
- Involve
- Northern Ireland Confederation of Health and Social Care
- Social Enterprise Northern Ireland
- Chief Executives Forum

[Visit the EPIC Futures NI website](#)

FORTH20

FORTH20

The Stirling LPIP will develop a multidisciplinary science-based capacity to optimise outcomes for water resources in the Forth Water Basin in Scotland.

It is a partnership between the Universities of Stirling, Edinburgh, Glasgow and Heriot Watt, the James Hutton Institute and the National Institute of Economic and Social Research, as well as the Scottish Environment Protection Agency, Scottish Water and around eighty further project partners.

It will address:

1. The economy, including how to optimise outcomes from water resources, in the pursuit of sustainable and inclusive economic growth.
2. Community, including how to raise stakeholder capacity to enable and connect new opportunities from partnership, including community resilience and empowerment.
3. The environment, including how to build productive and harmonious relationships between human and natural systems.

The Team

- [Richard Simmons](#), Principal Investigator, University of Stirling
- [Dr Pauline Lang](#), Research Partnership Manager
- [Dr Kathleen Stosch](#), Research Partnership Officer
- [Dr Lizzie Smith](#), Research Fellow for Place and Wellbeing
- [Dr Chris Littleboy](#), Postdoctoral Research Fellow, FORTH20 Data Lab
- [Perla Errasti Hernandez](#), PhD Student researching entrepreneurial ecosystems and innovation
- [Harriet Crisp](#), PhD student researching people's experience to water in the Forth River basin
- [Igor Yegin](#), Researcher monitoring and optimising connectivity between FORTH20 partners
- [Matthew Gower](#), PhD student researching how to optimise the value of water for individuals, communities

More Key Partners

- Scottish Government Regional Economic Development, Natural Capital, Wellbeing Economy, Agriculture and Rural Economy, Energy and Climate Change, and Water Policy Directorates
- City of Edinburgh, East Lothian, West Lothian, Falkirk, Stirling, Clackmannanshire and Fife Councils
- Forth Ports, Scottish Canals, Forth Rivers Trust, Forth Estuary Forum
- Loch Lomond & Trossachs National Park Authority; Scottish Land and Estates
- Scottish Wildlife Trust, NatureScot, Greenspace Scotland, Sniffer, RSPB Scotland, WWF Scotland
- Scottish Enterprise, Skills Development Scotland, Forth Valley, Edinburgh and Fife Chambers of Commerce and FE Colleges
- Scotland's Innovation Centres: CENSIS, IBIOIC, BE-ST
- Public Health Scotland, NHS Fife, NHS Forth Valley, NHS Lothian
- Community Enterprise

[Visit the FORTH20 website](#)

Living and Working More Sustainably in a Greener Economy – Evidence Review

Matt Lyons, LPIP Hub

Context

The impacts of climate change are being felt across the world in increasing severity and frequency. As of 2024, temperatures were [currently 1.28 °C](#) above preindustrial levels. Nature in the UK is also under threat with wildlife having declined by an average of [19% since 1970](#), with nearly one in six species threatened with extinction.

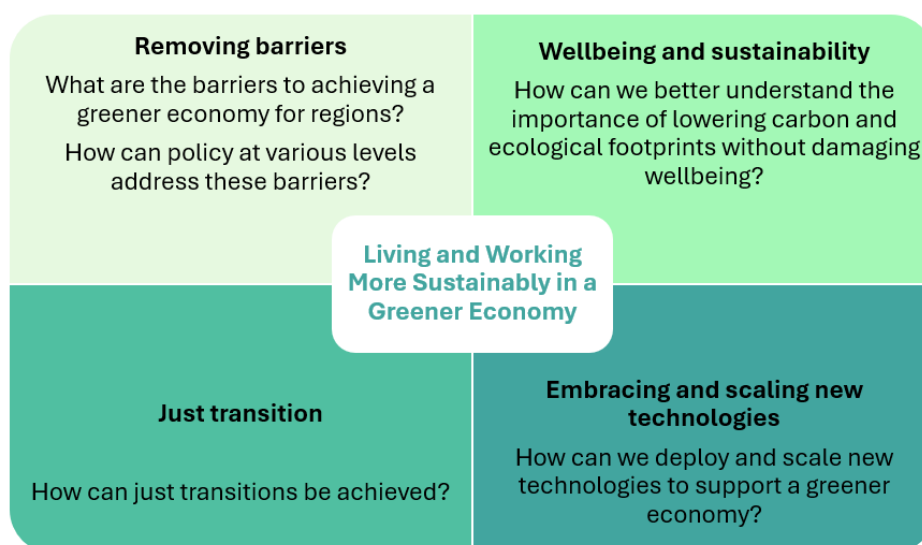
The international community has set obligations to deliver net-zero by 2050 with interim targets in 2030 and 2040. Alongside goals to curb emissions there is a separate international movement to address biodiversity loss. The UN has designated the 2020s as the ‘Decade of Ecosystem Restoration’ to prevent, halt, and reverse ecosystem degradation worldwide. Central to this international effort is the [United Nations Environment Programme](#).

The UK Government has been an early adopter of net-zero policy and has made great progress. The UK Government has committed to the overarching goal of net-zero by 2050, Scotland has its own target of net-zero by 2045. Within the overarching goals there are interim targets and sector specific targets. Current goals are for a net [68% reduction in emissions](#) by 2030, and [95% clean energy generation](#) by 2030.

This evidence review sits in a series of other [LPIP evidence reviews covering the following thematic areas](#): Communities in their places; Cultural Recovery; Innovation; Local Economy; Skills; and Felt Experiences. This evidence review considers the academic literature, grey literature and policy documents to identify the burning questions and key challenges for sub-national actors in achieving a more sustainable, greener economy.

Key Concepts and Burning Issues

The burning questions surrounding living and working sustainably in the green economy are outlined below. These questions aim to uncover the key challenges and opportunities for local, regional and national governments in achieving a sustainable, greener economy. Addressing these questions is vital for developing targeted, effective and inclusive policies that can meet the distinct environmental and economic needs of different areas, fostering both sustainable growth and more sustainable development.



Key Findings

Nature recovery is underrepresented in environment policy

In the UK, action to support nature recovery is underdeveloped, with weaker legal targets and significantly less funding despite its role in climate resilience. While new policy has mandated Biodiversity Net Gain in relation to development, it lacks the rigour and enforcement needed to drive large-scale ecosystem improvement.

- **Key takeaway:** Nature recovery goals and metrics should be incorporated into local action plans. It is important to consider the protection and recovery of the natural environment alongside the decarbonisation of the economy and society.

Regions have differential strengths and weaknesses

Regions have different industrial compositions and geographies which in turn means that they have different strengths, weaknesses, opportunities and threats in reference to net zero, nature recovery and living sustainably.

- **Key takeaway:** Policy should seek to work with the grain of the regional economy. Some regions will have different timelines to achieving net zero which must be recognised.

Early interventions are cheaper in the long run

Earlier interventions will prevent greater costs in the long run in terms of environmental, social and economic impacts. However, long-term policy action is often constrained by short-term policy agendas from central government, short-term funding pots limiting long-term planning, and pressures from businesses to prioritise short-term economic goals over environmental ones.

- **Key takeaway:** The opportunity cost of delay, both in terms of nature recovery and decarbonisation is high and not routinely considered in policy agendas.

Decarbonisation can be achieved with a place-sensitive approach

Decarbonising the economy can have uneven impacts on communities. However, there are good examples of managing industrial transitions to minimise social and political upheaval through community engagement and targeted policy intervention.

- **Key Takeaway:** Change needs to reflect context and community interests. It is important to plan for a gradual transition which allows places, cultures and communities to adapt. Successful interventions involve local buy-in and engagement from a range of stakeholders and residents.

Local, regional and national governments have different but complimentary roles

Multi-scalar governments play important roles in providing funding and infrastructure as well as shaping consumer choices and activity. Successful multi-level environmental policy requires long-term planning, alignment across government levels, empowerment of regions and communities, and institutional place-based partnerships. However, the asymmetric power dynamics of the UK governance system can reduce ambitions and the pace of change on the ground.

- **Key takeaway:** Finding the right balance between decision makers allowing local and regional authorities to have support from national level actors can enhance the impact of environmental policies.

Examples of partnership working in the UK

- **Transport innovation in Manchester**

Challenge: Like many urban areas, Manchester is facing high levels of air pollution, which is estimated to cost [1,200 lives annually](#), and congestion, which is estimated to cost the city-region over [£1.3bn annually](#).

Solution: Transport policy at the national level reflects the evidence that higher levels of active travel and public transport use have the potential to reduce carbon emissions and improve the liveability of communities across a range of factors. Greater levels of active transport have benefits for health, community and retail.

Partners: To implement the various transport innovations listed it required partnerships from different levels of government as well as private sector and third sector partners. At the government level, the UK DfT provided funding and regulatory support for infrastructure such as Metrolink. At the city-region level, the GMCA and TfGM worked together on strategy, planning and funding. Local councils collaborated and consulted on implementation and community needs. Private sector partners such as Stagecoach, Kelois Amey and Siemens were involved in implementation. Community groups and third sector organisations like cycling charity Sustrans were also involved in supporting project plans.

- Net-Zero Power in Teesside

Challenge: Teesside has an industrial history and as such is one of the UK's highest emissions regions. The region hosts high emissions 'hard-to-abate' sectors including chemicals and cement production. Without the development of viable alternatives increasing net-zero regulations will lead to closures and economic hardship in the region.

Solution: The Net-Zero Teesside Power is a gas-fired power station with carbon capture technology which aims to produce [742 megawatts of low carbon power](#). The project aims to enable heavy industry in the region to cut emissions without ceasing operations.

Partners: The project is led by BP with a consortium of industry stakeholders including TotalEnergies and Equinor. The partnership is coordinated with the East Coast Cluster and in partnership with UK Government and was (2020) backed by investments such as Carbon Capture Infrastructure Fund (CCSIF).

Impact: The project aims to capture up to 2 million tonnes of CO₂ per year. NZT power estimates it would create 3,000 construction jobs and require 1,000 employees during operation. Northern Endurance Partnership estimates suggest the East Coast Cluster could [create 25,000 jobs annually from 2030](#).

Challenges and Future Research

The evidence review has identified some areas where further research could add value and fill gaps in the literature, shaping policy and practice in future:

1. **Removing Barriers:** Future research could seek to better understand these barriers and how policy can help to overcome them.
2. **Just Transition:** Future research could seek to understand the scale of potential shocks in UK regions and evaluate how policy could support a socially acceptable transition.
3. **Understanding Indirect Impacts:** Future research could map these indirect impacts to better understand the often spatially blind nature of policy interventions.
4. **Policy Mapping:** It is still difficult to understand the powers available to different regions and devolved nations to address climate and environment goals. Devolution has led to an ad-hoc arrangement of different powers being attached to places such as the Trailblazer regions, combined authorities, metro

mayors and local authorities. An important exercise would be to understand the powers and resources that are available to tackle the different aspects of sustainability set out in this report.

Conclusions

The review has highlighted examples of successful policy interventions both within the UK and internationally, and the main contextual points are that:

- Moving towards a greener economy presents differentiated opportunities for regional development policy and practice.
- Different places face different challenges in transitioning to sustainable development.
- There is a complex hierarchy of powers and policy levers that operate at different spatial scales making it impossible to avoid place-based practice and experiment for success. As such, demonstrating the importance of the LPIPs.

Download the report – [LPIP Hub Evidence Review: Living and Working Sustainably in a Greener Economy](#).

LPIP Blogs

This section sets out some of the blogs that have been produced as part of the LPIP Hub programme.

Blog	What Is Innovation in Policy?
Author	Gerardo J. Arriaga-Garcia, David Legg, Nina Ruddle, Rebecca Riley, Abigail Taylor and Paul Manners, LPIP Hub
	<p>This blog discusses what innovation within policy is and how it can drive transformative change. Including discussing the key dimensions of policy innovation, challenges in innovating policy, stimulating policy innovation and provides successful examples of policy innovation.</p> <p>Link to report</p>
Blog	Policy Change Can Help Manage the Demand for Graduate Knowledge and Skills
Author	Kostas Kollydas, LPIP Hub and Chris Millward, University of Birmingham
	<p>The assumption that knowledge drives economic growth has shifted to a focus on skills. This log investigates the policy surrounding higher education, including the new policy environment and particularly how local and region policy is playing an increasingly greater role in higher education.</p> <p>Link to report</p>
Blog	What Online Job Posting Data Reveals About How Flexible and Remote Work Vary Across the UK
Author	Kostas Kollydas and Anne Green, LPIP Hub
	<p>Dr Kostas Kollydas and Professor Anne Green investigate the geography of flexible and remote work in the UK, drawing on trends from online job posting data.</p> <p>Link to report</p>

Research and Reports

This section sets out recently released report and research, relevant to the work of the LPIP Hub, LPIPs and partners.

Report	South Yorkshire Sub-Regional Report 2025
Author	YPERN
Published	24th April 2025
	<p>The report, authored by Rich Crisp, Dan Olnier, Jamie Redman, Elizabeth Sanderson, Vania Sena, and Peter Wells, provides a detailed overview of the collaborative initiatives undertaken by the South Yorkshire team in partnership with the South Yorkshire Mayoral Combined Authority (SYMCA). It highlights the ongoing collaboration with SYMCA, focusing on enhancing regional economic development and addressing skills shortages. A key aspect of this partnership is the transition from reactive contract research to a strategic partnership model, which promotes long-term collaborations between Y-PERN, Sheffield Hallam University (SHU), the University of Sheffield (UoS), and SYMCA.</p> <p>Link to report</p>
Report	Nation Rebalanced: How do we create a country that works for all places?
Author	Labour Together
Published	7th April 2025
	<p>This report investigates the rebalancing of government and private sector investment to reduce place-based inequalities and unequal economic growth.</p> <p>Link to report</p>
Report	How to do industrial strategy
Author	Resolution Foundation
Published	7th April 2025
	<p>This paper sets out a practical approach to industrial strategy in the UK, focused on boosting private investment and productivity. It offers a comprehensive framework for policymakers seeking to boost private sector investment and productivity, drawing on decades of past experience and new analysis of what works. The paper considers the case for sectoral, technological and place-based approaches to industrial strategy, and proposes twenty concrete policy tools to help governments design and deliver effective interventions.</p> <p>Link to report</p>
Report	Are Skill Requirements Still Rising?
Author	WISERD
Published	April 2025
	<p>This report examines key trends in qualifications held, the different types of skills used at work, trends in job related training and learning at work and the degree to which workers can use the qualifications, skills and experience that they possess. The report paints a picture of rising long term trends in skills requirements, increasing opportunities for learning at work and falling levels of skills mismatch. The marked recovery in job related training demonstrates how the skills system has responded to an historically tight labour market.</p> <p>Link to report</p>

Report	The impact of hybrid working on the high street
Author	Centre for Cities
Published	28th March 2025
	Five years after the UK went into lockdown, this briefing looks at the impact of hybrid working on spending patterns by workers in both city centres and their local neighbourhoods. Link to report
Report	Regional economies: The role of industrial strategy as a pathway to greener growth
Author	IPPR
Published	25th March 2025
	This report makes the case that regions like the North should have a key role to play in the development of a green industrial strategy to ensure that it draws on place-based strengths and has the potential to deliver opportunity and optimism to places that have suffered from past deindustrialisation, feeling economically and politically overlooked for too long. Arguing for a pathfinding approach to green industrial strategy focussed on the future and our places' potential, while harnessing local strengths. Link to report
Report	Generating hope
Author	Localis
Published	25th March 2025
	This report from UK think tank Localis looks at how the Local Power Plan can build on best practice and overcome local barriers to drive energy decarbonisation. Link to report
Report	Powering Up the North West
Author	Centre for Local Economic Strategies
Published	25th March 2025
	This offer and ask document from the North West Regional Leaders' Board to the UK government was prepared by CLES. It demonstrates the region's substantial potential for inclusive and sustainable economic growth, alongside public service excellence, and outlines the critical policy reforms needed from Westminster to scale and amplify our notable successes to date. Link to report
Report	Lessons and recommendations from What Works Growth's evaluations of local growth policies
Author	What Work's Centre for Local Economic Growth
Published	23rd March 2025
	This briefing summarises the lessons learned from our 'demonstrator evaluations' of the Eat Out to Help Out scheme, Enterprise Zones, the Growth Vouchers Programme, and Local Major transport schemes. These projects involve working with partners to demonstrate that evaluation of local growth policies is possible and to assess the applicability of different evaluation methodologies to common evaluation questions. Link to report
Report	The art of the possible: Unlocking the potential of community-based finance

Author	Connected Places Catapult
Published	17th March 2025
	<p>The project aims to identify new or underutilised mechanisms that enable local public bodies, businesses, and citizens to take a financial stake in the success of their communities, with a particular focus on delivering place-based initiatives and driving innovation. It presents a series of case studies showcasing current practices and opportunities for further development, alongside recommendations for these approaches to evolve and contribute further to thriving local economies.</p> <p>Link to report</p>
Report	The Value of High Street Heritage Action Zones
Author	Historic England
Published	17th March 2025
	<p>Supported by the Department for Culture, Media and Sport, the Ministry of Housing, Communities and Local Government, Arts Council England, and the National Lottery Heritage Fund, the programme aimed to help high streets transform into vibrant community spaces by investing in buildings and the public realm, creating new partnerships, empowering communities and celebrating local culture through heritage.</p> <p>Link to report</p>
Report	An exploration of local variations in health and job outcomes across the UK
Author	Learning and Work Institute
Published	10th March 2025
	<p>New analysis from Learning and Work Institute for the Commission for Healthier Working Lives shows that the number of people economically inactive due to ill health has risen across all UK nations and regions.</p> <p>Link to report</p>
Report	Feeding the future
Author	Centre for Local Economic Strategies (CLES)
Published	10th March 2025
	<p>While recognising the many obstacles anchor institutions face in buying food locally – ranging from procurement constraints to deficiencies in local supply – this report sets out a roadmap of interventions that food system actors can follow to deliver healthy, sustainable and local food to their communities.</p> <p>Link to report</p>
Report	Fostering Democratic Innovations in Wales: Lessons From Around the World
Author	The Welsh Agenda
Published	4th March 2025
	<p>Fostering Democratic Innovations in Wales, produced in collaboration with Aberystwyth University and the Centre for Welsh Politics and Society, and co-authored by leading academics Dr Anwen Elias, Dr Eleri Phillips and Dr Jennifer Wolowic, examines democratic innovations put into practice across the world, and how they could be implemented in a Welsh context.</p> <p>Link to report</p>
Report	Young people’s wellbeing in doubly disadvantaged neighbourhoods in Greater Manchester

Author	Local Trust
Published	4th March 2025
	<p>This report examines young people's wellbeing, through the lens of those living and growing up in doubly disadvantaged neighbourhoods in Greater Manchester.</p> <p>Link to report</p>
Report	How can areas successfully reorganise local government and implement devolution at the same time?
Author	Institute for Government
Published	3rd March 2025
	<p>Based on detailed research into past waves of local government reorganisation and devolution, this report, published in partnership with Grant Thornton UK LLP, makes a number of recommendations for how local leaders and central government can successfully navigate the challenges of 'dual delivery'.</p> <p>Link to report</p>
Report	2025 State of Local Government Finance in England
Author	LGIU (Local Government Information Unit)
Published	March 2025
	<p>The 2025 report reveals how local government reorganisation and rises in National Insurance Contributions represent additional challenges for a sector that is already in a state of crisis management. Occurring against a backdrop of surging service demand and councils pulling all the levers available to them, a high proportion of authorities believe it is likely that they will issue section 114 notices in the short and medium term. This report outlines the appetite for change that exists in the sector and the steps that the UK government must take to ameliorate the crisis facing councils' finances.</p> <p>Link to report</p>
Report	Regional Productivity Agenda
Author	The Productivity Institute
Published	27th January 2025
	<p>This report builds on the work of The Productivity Institute's eight Productivity Forums across the UK. After their initial assessments in 2020 and 2021, each Forum has recently revisited the state of productivity performance at sub-regional, regional, and devolved nation levels. The research, which is summarised in this volume, also provides in-depth analysis of key areas of pro-productivity policies at the regional level, as described above.</p> <p>Link to report</p>

Events

Online Event	Playing the long game: How can the Industrial Strategy succeed? – Centre for Cities
30th April 12:00pm - 13:00pm	<p>Nearly six months on from the Industrial Strategy Green Paper, join Centre for Cities and expert panellists to take stock of the external factors shaping the strategy in 2025, and the latest reflections on what we could expect from the final White Paper. Discussion will focus on the concrete policy interventions the Industrial Strategy will need to take to meet the different needs of places around the country, particularly cities outside the Greater South East.</p> <p>Register here</p>
Conference	Y-PERN 2025 Conference: Bridging Academia and Policymaking
27th June 9:00am – 3:30pm	<p>The conference will bring together leading academics, policymakers, and practitioners to explore innovative approaches to incorporating academic research into impactful policies. With confirmed speakers including Tracy Brabin, Mayor of West Yorkshire, and Robin Tuddenham, Chief Executive of Calderdale Council and President of Solace, the day will include stimulating panel discussions, insightful case studies, and interactive sessions aimed at fostering meaningful dialogue and collaboration. These activities will help us explore ways to achieve multi-level growth, promoting fairer, greener, and more inclusive futures.</p> <p>Register here</p>
Conference	WISERD Annual Conference 2025
30th June and 1st July	<p>The theme for the WISERD Annual Conference 2025 talks to widespread concerns regarding the form and function of civil society in a period marked by social, political and economic discontent and upheaval at local, regional, national and global scales.</p> <p>Register here</p>
Conference	Local Government Association Conference: Empowering people, empowering places
1st July to 3rd July	<p>As local government faces the biggest set of changes in over half a century, this year's LGA Annual Conference and Exhibition comes at a pivotal moment. Navigating these changes, councils confront increasingly complex community needs and inequalities, rising costs and static income within a challenging economic landscape and an accelerating pace of technology that will transform how we all live, work and deliver services. Looking toward 2030 and beyond, we'll explore bold strategies to empower people and places - harnessing innovation, embracing new technologies, reimagining service delivery and giving communities a say in how their councils are organised, led and run.</p> <p>Register here</p>
Summit	Community Wealth Building Summit 2025 – Centre for Local Economic Strategies
3rd July 2025	<p>The Community Wealth Building (CWB) Summit 2025 is the UK's leading event dedicated to building better local economies. This year we will bring together local economic changemakers, place leaders, grassroots innovators and policymakers to explore how both community wealth building and changes in local democracy can open up opportunities for communities to own the future of their local economies.</p> <p>Register here</p>
Conference	CiviCon 2025 – Civic University Network and National Civic Impact Accelerator

**14th to 15th
October 2025**

Join professionals, academics, and senior leaders from higher education institutions and civic partners to explore exemplary initiatives and gain practical tools for civic engagement. This event is ideal for higher education institutions, including academics, researchers, professional services staff, and civic teams, as well as external partners such as Combined Authorities, NHS Trusts, Civil Service, and community stakeholders.

[Register here](#)

Disclaimer: The contents of this document are based on the latest data available and the contribution of partners in a fast-paced environment, therefore we urge caution in its use and application

For any queries, please contact the lead Authors:

Alice Pugh A.Pugh@Bham.ac.uk
Abigail Taylor A.Taylor.7@bham.ac.uk
Rebecca Riley R.Riley@Bham.ac.uk
Anne Green A.E.Green.1@bham.ac.uk



The Local Policy Innovation Partnership Hub is funded by the UKRI

