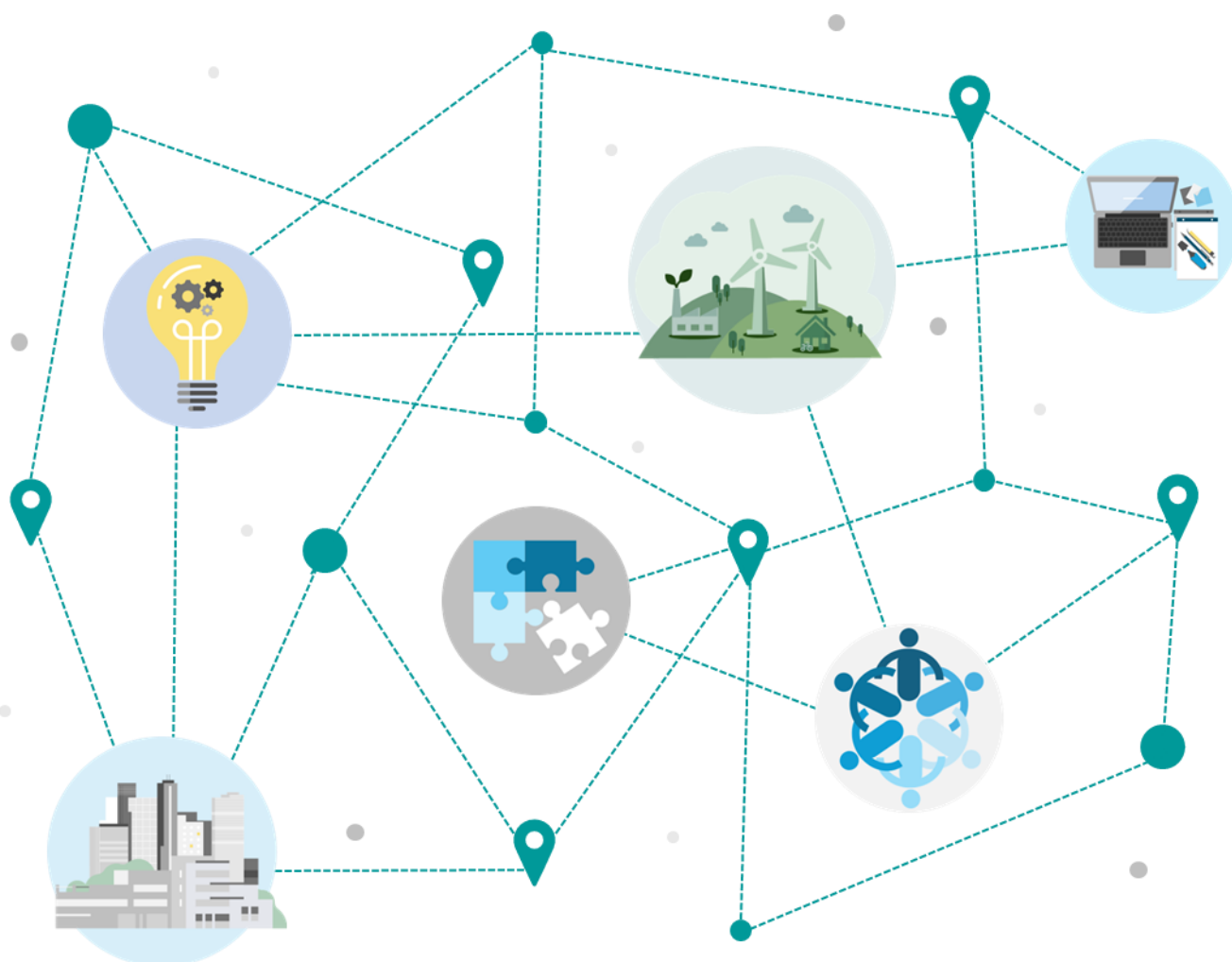


The Local Policy Innovation Partnership (LPIP) Hub seeks to address nationwide issues through local partnership and place. The LPIP Hub programme has been designed to support local and national policymakers in tackling place-based challenges, driving sustainable and inclusive economic growth and reducing regional disparities in the UK.

Policy Innovate aims to pull together and disseminate the work of the LPIP programme and wider relevant research. With the aim of providing evidence around building confidence, capacity and capability in an effective service-driven approach to place-based policy making and public service delivery.



Contents

Meet our Place Fellows.....	3
LPIP Publications	13
External Publications	15
Events	19

Meet our Place Fellows

We are delighted to announce the successful appointment of our Local Policy Innovation Partnership (LPIP) Place Fellows. These exceptional individuals bring a wealth of experience, creativity, and passion to help drive local policy innovation across the UK.

The LPIP Place Fellows represent a diverse mix of regions, sectors, and expertise. This diversity underscores our commitment to inclusive and impactful policy innovation. The Fellows come from fields spanning economic development, social policy, and environmental sustainability, creating a rich network for collaboration and mutual learning.

As we embark on this exciting journey, we look forward to seeing the meaningful partnerships and initiatives that will emerge. The LPIP Hub remains dedicated to fostering a thriving ecosystem of local leaders equipped to tackle regional challenges and amplify policy impact.

Glenn Athey

Managing Director, Mylocaleconomy



Dr. Glenn Athey has 30 years of experience in regional economic development, including a PhD from the University of Glasgow, which was part-sponsored by Scottish Enterprise.

Glenn has wide-ranging experience in local and regional economic analysis, with specific experience in labour market research, intelligence, and demand analysis, and its application to policy, strategy, and delivery plans. He specialises in evidence-based policy, from economic analysis to using this to specify and articulate policy options and delivery mechanisms.

Glenn was Senior Labour Market Economist for Futureskills Scotland (part of the skills directorate at SE, and also working with HIE) 2001 to 2004, Head of Enterprise Strategy and Policy at London Development Agency 2004-2006, Head of Research at The Centre for Cities 2006-2008, Director of Research and Intelligence at the East of England Development Agency 2008 to 2011, and Executive Director of Greater Cambridge Greater Peterborough LEP 2012-2013, and Principal Consultation for Regions, Cities and Local Economies at Cambridge Econometrics 2020-22.

Glenn currently runs a specialist consultancy for economic development policy, strategies and advice at mylocaleconomy.org

[Link to Profile](#)

Ed Atkins

Senior Lecturer, School of Geographical Sciences, University of Bristol



Ed Atkins researches the contested character of environmental and energy policy and politics. This is with a particular focus on the local politics of energy generation and consumption, decarbonisation and climate action.

[Link to Profile](#)

Val Birchall

Chair of the National Alliance for Cultural Services and a Fellow of the Royal Society of Arts, and a member of the Academy of Urbanism

Val Birchall has led culture, tourism, events and sport services in local government for two decades. She is the Chair of the National Alliance for Cultural Services and has



worked as a consultant and lecturer in cultural policy. Val has worked across Europe supporting cities to develop their cultural strategies, including for the Culture for Cities and Regions and the Cultural Heritage in Action programmes delivered by Eurocities.

Her particular research interest is in the implications of emerging experimental models of local governance for the leadership of cultural policy. Val is a Fellow of the Royal Society of Arts and a member of the Academy of Urbanism.

[Link to Profile](#)

Amy Burnett

Research Fellow at the Centre for Enterprise, Environment and Development Research (CEEDR) at Middlesex University's Business School



Dr Amy Burnett is a Research Fellow at the Centre for Enterprise, Environment and Development Research (CEEDR) at Middlesex University's (MDX) Business School and a Research Fellow at the Centre for the Understanding of Sustainable Prosperity (CUSP).

Her research and practitioner work focuses on civil society groups and government to promote and incentivise innovative and sustainable development in the context of sustainable finance, planning, policy, placemaking, and place-based identities. She has significant experience as a practitioner in the UK community, planning and international development sectors.

[Link to Profile](#)

Linda Christie

Applied Economist and Strategic Policy Professional



Linda is an applied economist and strategic public policy professional, including some 25 years of varied policy and academic expertise, having delivered a range of projects of national significance. She trained as a government economist in the early part of her career, progressing on to head up economic development strategy at Glasgow City Council for over 10 years. Linda was Head of Scotland's Green Skills Strategy at Skills Development Scotland, and latterly, Head of Programmes for Scotland's Circular Economy Strategy at Zero Waste Scotland.

Linda is an expert in Economic Development policy in Scotland, having designed and delivered a range of projects, including: City/Regional Growth Deal Business Cases; regeneration 'legacy' and investment 'Benefits Realisation' strategy; Glasgow's Transformational Housing Regeneration Areas Strategy; UoG Civic Strategy and Sustainable Development Goals and Inclusive Innovation District Strategy; Scotland's Net Zero Skills/Green Jobs Strategy; Scotland's Circular Economy strategy. Her policy practitioner expertise includes: MSP, ASPM, Portfolio/Programme Management; HMT Green Book and Theory of Change approaches to policy design and implementation; Strategic Planning and Economic Development Policy Strategy; Research Impact, Measurement, Performance, Benefits Management and Governance.

Linda has a BA honours degree and MSc in regional economics from University of Strathclyde and PhD from University of Glasgow. Her academic research, publications and areas of interest include: regional policy; governance and 'public value' of urban local government partnerships; the role of formal and informal 'institutions'; Economic Development and Housing Policy in Scotland; Inclusive Growth and Net Zero Skills Policy.

[Link to Profile](#)

Tamara Cincik

CEO of Fashion Roundtable, Professor of Fashion and Sustainability at Bath Spa University and a UK Trade and Business Commissioner



Tamara is a CEO with renowned experience in brand consultancy, public speaking, and writing. Previously she had a highly successful international career as a stylist for catwalk shows, celebrities, editorial and brands. She was headhunted to head up the new department and centre for fashion and sustainability at a leading UK university, where she led the team, strategic planning and delivery. Tamara is the Founder and CEO of Fashion Roundtable, fashion's leading think tank and change agency. Tamara is also a Commissioner for the UK Trade and Business Commission.

Tamara led the creation and delivery of the Great British Wool Revival which has successfully mapped the UK wool industry from farmer and fleece to fashion and designer in partnership with The King's Foundation and Yoox Net-A-Porter for their Modern Artisan project, with the aim of promoting on-shoring, fibre sovereignty and better business opportunities across the UK's value chain.

She sits on numerous industry and advocacy roundtables and Boards across business, the creative industries, public affairs and sustainability. She is regularly asked to speak on panels, TV and chair debates.

Tamara was the secretariat for the All Party Parliamentary Group for Textiles and Fashion 2017 – 2021 and is now the secretariat for the All-Party Parliamentary Group for Ethics and Sustainability in Fashion.

[Link to Profile](#)

Sophie Cloutterbuck

Director of London Engagement and the London Met Lab: Empowering London at London Metropolitan University



Sophie is the Director of London Engagement and the London Met Lab: Empowering London at London Metropolitan University. She spearheads the Civic and Community stream of the University's strategy and is a dedicated advocate for civic engagement. Her commitment to community impact is reflected in her numerous roles and affiliations. She is a member of the UK's National Civic University Advisory Board and Chair of London Higher's Civic Network, working to strengthen collaboration and innovation within the higher education sector.

Sophie's work is rooted in a deep understanding of the symbiotic relationship between academia and community. She collaborates with colleagues across the University and the wider community to ensure London Met fulfils its role as a civic institution, providing students with opportunities to develop into value-driven leaders.

Her extensive involvement in London's civic landscape includes serving on various boards and working groups, such as those within local government, the National Health Service, and community organisations. For example, the London Anchor Institution Network's (LAIN) Hiring & Skills and Place working groups and the Tower Hamlets Health Determinants Research Collaboration (HDRC). Additionally, Sophie is a Trustee for the London charity Friends of Upward Bound.

With a background in youth work and over 20 years of experience at London Metropolitan University, including a previous role as Head of Outreach and Widening Participation, Sophie brings a wealth of practical experience to her current position. Her early career change from finance was inspired by her volunteer work with young people at risk, where she witnessed firsthand the transformative power of community engagement.

A proud alumna of London Metropolitan University, Sophie holds a Master's of Education (2011) and a BSc (Hons) in Sociology from its predecessor institution, London Guildhall University.

[Link to Profile](#)

Tom Crick MBE



Professor of Digital Policy at Swansea University and Chief Scientific Adviser at the UK Government's Department for Culture, Media and Sport

Tom Crick MBE is Professor of Digital Policy at Swansea University and Chief Scientific Adviser at the UK Government's Department for Culture, Media and Sport.

His interests sit at the research-policy-practice interface, identifying and addressing domain problems with broad digital, data-driven and computational themes, and especially focusing on the impact on citizens, communities, culture and the economy.

Tom has led the major science and technology curriculum reforms in Wales over the past 10 years and has recently driven the development of Swansea University's first civic mission strategy. He was also an inaugural Commissioner of the National Infrastructure Commission for Wales and an expert panel member for the Welsh Government's 2019 Review of Digital Innovation and the Future of Work.

Tom has held non-executive roles in the utilities and health & social care sectors, as well as senior board-level or advisory roles with Nesta, Ofcom, Industry Wales, and BCS, The Chartered Institute for IT.

[Link to Profile](#)

Ceri Davies



Director, Centre for Deliberation

Ceri's background combines academia, civil society and social research, where for the last 15 years she has worked on how to engage citizens and publics meaningfully in shaping research, policy and practice.

She is currently Director of the Centre for Deliberation at NatCen and previously ran the University of Brighton's Community Knowledge Exchange, supporting partnerships between academics and community organisations, as well as roles in community development and social action.

[Link to Profile](#)

Kevin Fenning



Director, Evidence First

Kevin Fenning is an economic consultant with 16 years' experience leading teams for public and private sector clients. Kevin's work focuses on economic strategy and analysis, and building the case for investment in locally significant projects.

Kevin works extensively with local and central government to support and promote economic development, as well as working on behalf of a range of other organisations and anchor institutions, including research councils, universities, business representative organisations, investors and developers, and NHS Trusts.

[Link to Profile](#)

Head of Service – Policy, Insight & Change, City of Doncaster Council

Jon Gleek

Jon works as a senior manager in the City of Doncaster Council with a responsibility for change management, insights, data and policy development.

Jon has a wide breadth of experience related to research and policy impact in a city setting, working with a wide range of academic and university partners for my work.

Jon is also undertaking a part-time policy fellowship with UCL on Research Cities.

[Link to Profile](#)

Ian Harvey

Head of the Institute of Place Management, joint Founder and Vice President of Civic Voice

‘Ian’s leadership, vision, and commitment to the civic cause, providing support and voice to thousands of place-makers in the UK,’ said Manchester Metropolitan University’s Institute of Place Management when it named Ian a Senior Fellow in March 2021.

Ian is the Joint Founder/Executive Director of Civic Voice and Secretary of the All-Party Parliamentary Group on Civic Societies.

Ian is a member of the High Street Task Force’s Executive Group and is currently CEO at the Institute of Place Management – the global institute dedicated to improving places.

[Link to Profile](#)

Nicola Headlam

Independent Economic Adviser

Nic has more than 20 years of experience working within all aspects of the multi-helix innovation system; central and local government, civil society and campaigning, academic research and knowledge mobilisation and in industry. Along the way, she has honed expertise in urban and regional subnational economic development, the roles of government in making and shaping place, and in data and evidence for transformation.

In 2024, she became a freelance economic advisor on the role of leadership and partnerships, urban and living lab forms for research, future of cities and foresighting methods, urban transformations, place-branding and urban regeneration and the spatial consequences of public policy.

She works on the intersection of governance with economic development and the importance of institutions in infrastructure, and has broad experience of the limits of weak and improvised structures.

She is passionate about the potential of subsidiarity to and through reformed local government to remedy some of the egregious inequalities of the UK and is hopeful that recast central-local relations, rooted in strong evidence and partnerships for pro-place policy and implementation, hold the key to socio-spatial disparity.

[Link to Profile](#)

Sue Jarvis

Co-Director the University of Liverpool’s Heseltine Institute for Public, Policy, Practice and Place

Sue co-leads the University of Liverpool’s Heseltine Institute for Public, Policy, Practice and Place, which is at the forefront of debate on local and regional economies. A former director at Liverpool City Region Combined Authority and Knowsley Council, Sue has



senior leadership experience of delivering public services, including complex programmes where activities are undertaken by partners across multiple agencies and geographies.

Sue's expertise spans the policy domains of employment and skills, local economic development, regional devolution and communities in their places.

At the Heseltine Institute, Sue leads stakeholder engagement to align academic research with policymaking to explore critical public policy challenges and choices facing cities and city regions. Her role includes working as academic advisor to the Liverpool City Region All Party Parliamentary Group, evaluating the impact of national policies on local prosperity and leading key agendas for civic engagement. Sue also delivers a diverse portfolio of research and consultancy, influencing and impacting place-based policy and has considerable experience of writing for policy and practitioner audiences.

Sue is currently a co-investigator in the NIHR funded Health Determinants Research Collaboration Liverpool, leading the knowledge mobilisation programme.

[Link to Profile](#)

Angela Jeffery

Co-Chair Birmingham Citizens



Angela has been working at the interface between communities, universities, business and the public sector for the last 22 years.

She is currently working with the Legacy Centre of Excellence on the Newtown ward (of Birmingham) action plan coordination and is supporting the development of the Newtown Culture Strategy. She is also Co-Chair of Birmingham Citizens UK, (an alliance of Faith, Education, Community and Union partners), Director at the Blesst Centre (a social enterprise focussed on supporting young people's mental and physical health), Interim Executive Director at Saathi House (a women's charity in Aston focussed on empowering local women and young people to achieve their full potential and contribute positively to society) and is a Principal Associate at Loconomy Ltd where she is working on the Coalition 4 Impact project with developers and communities in the Energy Quarter in Tysley to bring about genuine inclusive growth.

Angela was previously Director of Regional Strategy at Aston University and led on the development and implementation of their Civic University Agreement. She set up significant regional partnerships and secured funding from the West Midlands Combined Authority for programmes such as the Decarbonisation Net Zero UKSPF and Business Energy Advice Service for the West Midlands.

She has D. Phil in Molecular Biology from The University of Oxford and an MSc in IP Management (Queen Mary, University of London), but most importantly for her current roles has a certificate in Community Organising from Newman University in association with Citizens UK.

[Link to Profile](#)

Lisa Jones

Assistant Director for Integrated Commissioning Health, Housing and Communities, Sunderland City Council

With over two decades of experience in the health and care sector, Lisa is focused on addressing inequalities and driving service innovation through collaborative place partnerships.



Lisa has a wide range of knowledge and experience in establishing effective place-level governance and leadership, fostering place-shaping, and unlocking new value through whole-system collaboration and integration.

She is passionate about leveraging research to accelerate learning and development, expanding traditional health and care partnerships to create innovative person-centred ecosystems, and maximising the potential of anchor institutions to create sustainable and inclusive social value.

[Link to Profile](#)

Allan Macleod

Head of Civic and Inclusivity, University of West England



Allan has worked in knowledge exchange from most sides, as a researcher, a local council officer and a knowledge exchange professional.

Allan led the application of research on the UN Sustainable Development Goals by working with Bristol City Council, local & national businesses, charities and organisations. Allan then joined Bristol City Council, where he worked at the City Office helping communities, organisations, businesses and civil society groups to engage effectively with each other, the City Council and the Mayor & his Cabinet. Allan supported work across Bristol's Environment, Homes and Communities and Transport boards as well as the Bristol Advisory Committee on Climate Change.

Allan also worked at PolicyBristol at the University of Bristol, helping academics across the University's faculties to engage with local and national policymakers and politicians, and was heavily involved in the Bristol region LPIP proposal, working with the University of West of England, University of Bristol and a wide variety of community groups.

Allan is passionate about helping community voices to be heard in policymaking and believes that research and community-based policymaking is the best way to deliver a more just and equal future for all.

[Link to Profile](#)

Stuart Mills

Assistant professor of economics at the University of Leeds



Stuart Mills is assistant professor of economics at the University of Leeds. His research focuses on decision-making and technology; on how technology shapes human behaviour; and on organisational decision-making concerning technology adoption and development.

[Link to Profile](#)

Helen O'Gara

Public Health professional and local charity leader



Helen is a Public Health professional with a community development and creative background. Her role in local government centres around health inequalities, place-based methodologies and community resilience.

Alongside this, she is a founder and trustee for a super-local literacy charity. She thrives in the space where policy meets practice, using co-production and working through relationships to translate and implement policy practically.

Joseph Owen

Research Fellow at the University of Southampton

Joseph is a research fellow at the University of Southampton, working in the Southampton Institute for Arts and Humanities (SIAH).

Joseph has led projects including 'Poetry, Policy and Place', 'Feeling Towns', and 'Neighbouring Data', the last of which explores the role of qualitative data in place-based decision-making.

Joseph is Co-Director of the Centre for Modern and Contemporary Writing (CMCW) and a specialist policy officer for Public Policy Southampton (PPS). He writes arts, film, and literary criticism

[Link to Profile](#)

Andrew Reeves

Associate Professor, De Montfort University Leicester

Andrew leads the Environmental Sustainability theme for De Montfort University as part of the 'Universities Partnership' civic university agreement for Leicester, Leicestershire and Rutland. The role encompasses responding to community and local government needs to develop collaborative projects for sustainability and climate action.

Andrew is also De Montfort's academic lead for Education for Sustainable Development and works as an Associate Professor focused on supporting action for sustainability in community and organisational settings.

[Link to Profile](#)

Ges Rosenberg

Research Fellow in Engineering Systems and Design in the Department of Electrical, Electronic and Mechanical Engineering at the University of Bristol

Dr Ges Rosenberg is a Research Fellow in Engineering Systems and Design in the Department of Electrical, Electronic and Mechanical Engineering at the University of Bristol, with roles as Systems Thinking lead for the Engineering Systems, Design and Innovation Research Group, and City Futures Theme Co-Lead at the Cabot Institute.

His research applies systems thinking and mathematical modelling approaches to a wide range of infrastructure and urban challenges, specifically focusing on decarbonisation and NetZero, climate change adaptation and resilience, and socio-technical aspects of a just transition, including improved public health co-benefits. This includes researching how to innovate and add value through transdisciplinary and collaborative approaches (coproduction and co-creation), and applying systems modelling to improve the management of interconnectivity in a complex 'system of systems'.

Currently Co-Investigator for the £6M UKPRP-funded TRUUD project, leading research into transdisciplinary approaches to complex urban health challenges and Researcher-in-Residence with the Connected Places Catapult, researching infrastructure decarbonisation in Bristol Temple Meads rail station innovation zone.

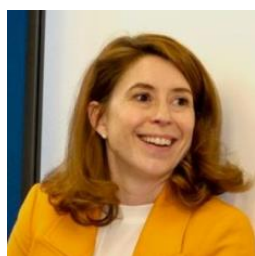
He was Co-Investigator and Project Manager for Bristol's Urban ID project, and as Project Manager investigated the impacts and opportunities of advanced manufacturing on sustainability and resilience at city-scale for the Re-distributed Manufacturing for the Resilient and Sustainable City. He applied the synthesis of

coproduction, learning journeys and systems thinking (from Urban ID) to support the development of Bristol's 'One City' approach and city digitalisation (funded by the Centre for Digital Built Britain).

He has 20 years of prior experience in industry, 12 years in mathematical modelling and analysis of nonlinear dynamic systems, and 8 years of business experience as Company Technical and Operations Director at Stirling Dynamics.

[Link to Profile](#)

Nina Ruddle



Head of Public Policy Engagement, Wrexham Glyndŵr University

A graduate of the University of Liverpool in Geography and Civic Design, Nina has 20 years' experience in public services in education, social and economic regeneration, and policy development/delivery.

As Head of Public Policy Engagement, she leads WU's civic mission partnership strategy across North Wales, which delivers a wide range of co-created civic mission work in collaboration with a vast range of partners and communities and aims to end social inequality by 2030. This work ranges from enabling systems leadership and whole systems thinking to support the implementation of the Well being of Future Generations Act (Wales) 2015, to establishing a North Wales Children's University and leadership education for Children and Young People focused on leadership, health & well being, skills for the future, aspiration, and food poverty. Earlier this year, she was recognised in the Future Generations Changemaker 100 list for Wales.

In her other roles, Nina is Vice Chair of the Civic Mission Network for Wales & Wrexham and Flintshire Public Service Board, a member of the Partnership Board for Actif North Wales, a member of the 2025 social movement and Chair of Mold Netball Club.

[Link to Profile](#)

Liam Smyth



Programme Lead, UK National Commission for UNESCO

Liam is a Chartered Manager who specialises in place-based cultural development that puts communities in charge of their own destinies.

Since 2023, at the UK National Commission for UNESCO, Liam has led the fundraising, research, development, and delivery of the Local to Global strategic investment programme. The programme aims to build a more resilient and adaptive network of UNESCO-designated sites, which cover 13% of the country's landmass. Liam has overseen the development of new resources in audience development, stakeholder mapping and inclusion; fundraising and financial sustainability; and digital transformation – and is increasing devolved decision-making through horizon-scanning, open innovation and collaborative futures techniques.

Liam's previous experience includes establishing the people-centred practice principles for an Arts Council England Creative People and Places project in the Black Country – focused on inspiring more people to choose, create and take part in brilliant art experiences in the places where they live.

He has worked as a consultant for various Arm's Length Bodies, combined and local authorities, to develop localised cultural policy. As a lead evaluator for the Birmingham 2022 Festival, Liam authored two public reports on region-specific cultural programmes that support global exchange and decentralised soft power and methods to embed inclusivity into mega events.

Liam is currently a trustee at Birmingham's internationally renowned Ikon gallery and is one of 2024/25's Arts Fundraising and Philanthropy's Senior Fundraising Fellows.

[Link to Profile](#)

Mark Swift



Chief Executive Officer, Wellbeing Enterprises CIC

Mark Swift is a serial social entrepreneur with over 20 years of experience working with the public and private sectors. He is the Founder CEO of Wellbeing Enterprises – a healthcare social enterprise, and one of the first Community Interest Companies (CICs) to be established. His special interests include health creation and health equity, social entrepreneurship and social economy and accelerating social innovation processes and social value creation.

He has previously held positions in the NHS as a Public Health Improvement Specialist and a Senior Project Manager leading on Clinical Quality. He is currently a Fellow of the Heseltine Institute for Public Policy, Practice and Place at the University of Liverpool and Ashoka, which identifies and supports the world's leading social entrepreneurs.

[Link to Profile](#)

Graham Thrower



Head of The Institute for Economic and Social Inclusion, University of Sunderland

Graham's area of research and practice encompasses economic and social inclusion, societal inequalities and the spatial context of disadvantage. Graham's experience extends across public, private and third sector entities as well as academia, where his research has been informed by economic geography and the specificity of place.

Graham's role at the Institute for Economic and Social Inclusion is to lead the University's work with its partners in areas such as inclusive learning, inclusive work, inclusive living and inclusive health. Through their interdisciplinary research and community-centred practice, the Institute provides evidence and insight to policy makers and partners to make a real positive difference for those most vulnerable in our society.

Graham has published work on the financialisation of our essential infrastructure, geographies of investment capital, and the challenges of local authority governance and statecraft in an era of globalised and mobile investment capital.

[Link to Profile](#)

LPIP Publications

This section sets out some of the blogs that have been produced as part of the LPIP Hub programme.

Paper	Balancing the Economic and Environmental Impacts of Net Zero: An Environmentally Extended Input-Output Approach
Author	Matt Lyons, LPIP Hub
	<p>A new study published in Environmental Research Communications reveals four lessons for regional policymakers. Dr Matt Lyons examines the balance between environmental and economic impacts of net zero when pursued by a demand management approach.</p> <p>Link to publication</p>
Briefing Paper	Data and Transparency for Combined Authorities: Briefing Paper
Author	Rebecca Riley, LPIP Hub
	<p>This briefing paper discusses the challenges and recommendations for improving data sharing and transparency among Combined Authorities (CAs) in England. It highlights seven key devolution asks to enhance collaboration between Mayoral Combined Authorities (MCAs) and the government, establish clear governance and accountability for data, standardise data collection and management practices, identify critical datasets, invest in local capacity, reduce the cost of licensing data products, and facilitate research collaboration. The paper emphasises the importance of data in driving evidence-based decision-making and achieving local policy objectives.</p> <p>Link to publication</p>
Blog	Why Power and Privilege Matters: Key Considerations for Meaningful Community Engagement
Author	Carly Walker-Dawson, Director of Capacity Building and Standards at Involve
	<p>Carly Walker-Dawson discusses how to achieve meaningful community engagement by acknowledging and addressing power imbalances to build trust, value lived experience, and foster equitable, inclusive participation.</p> <p>Link to publication</p>
Blog	Why Do We Want to Analyse the Local Economy as a System?
Author	Maryna Ramcharan, LPIP Hub
	<p>Maryna Ramcharan explains that local economies are dynamic, interconnected systems in which people, jobs, businesses, and technology continuously shape one another. Taking a systems approach to analyse local economies provides deeper insights into what makes them tick.</p> <p>Link to publication</p>
Blog	People, Place and Value: British Academy Innovation Fellowship Within the LPIP Hub
Author	Victoria Barker, Postdoctoral Research Fellow in the Centre for Creative Economies, Coventry University
	<p>Victoria Barker discusses her BA Fellowship, which looks at community engagement with cultural infrastructures and policy.</p> <p>Link to publication</p>

Blog	TAF/EDF Project – An Introduction
Author	Reen Blake-Carr, LPIP Hub
	<p>Reen Blake-Carr introduces the TAF/EDF project, highlighting key themes—evaluation setup, innovative use of place-based data, and effective dissemination—as essential for impactful, place-sensitive policy interventions across the UK.</p> <p>Link to publication</p>
Blog	The Evolving Art of Place Leadership
Author	Sam Markey, Ecosystem Director for Place Leadership Connected Places Catapult
	<p>In this blog, Sam Markey emphasises the transformative power of collaborative governance, strategic public procurement, and place-based impact investment in driving local renewal and prosperity amidst economic and social challenges.</p> <p>Link to publication</p>
Blog	The Role of Felt Experiences in Advancing People-Centred, Place-Based Approaches
Author	Rebecca Madgin, Professor of Urban Studies, University of Glasgow and Charlotte Hoole, Research Fellow II, LPIP Hub
	<p>We are delighted to share the latest report from the Arts and Humanities Research Council's Place Programme with our colleagues at the Local Policy Innovation Partnership (LPIP) Hub. The report engages with one of the key themes for the LPIPs: felt experiences and pride in place and puts them into the context of how we can advance people-centred, place-based approaches. The first part of this blog outlines the approach the authors of the report, Rebecca Madgin and Michael Howcroft, took in the AHRC Place Programme and finishes with some thoughts from Charlotte Hoole, Research Fellow on the LPIP Hub, as to how the report could help support their work with the LPIPs.</p> <p>Link to publication</p>

External Publications

This section sets out recently released report and research, relevant to the work of the LPIP Hub, LPIPs and partners.

Report	Leave to Achieve: How universities can contribute to social mobility in their regions
Author	Dani Payne, Social Market Foundation
Published	June 2025
	This report from UK think tank the Social Market Foundation explores how universities can contribute to social mobility in their regions.
	Link to Publication

Report	Lessons in local growth
Author	Jessica Craig and Natalie White, Power to Change
Published	June 2025
	This report from Power to Change highlights how strategic authorities can harness the power of the social economy to drive inclusive and sustainable economic growth.
	Link to Publication

Report	Lessons from Leeds: New case study explores the piloting of Areas of Research Interest (ARI) in local government
Author	UPEN
Published	June 2025
	The University Policy Engagement Network (UPEN) has launched a new case study which showcases work to support the development of Leeds City Council's 'Areas of Research Interest' (ARI). It presents the collaboration as good practice for working with local authorities and celebrates the ARI as an effective mechanism for developing evidence-informed policy.
	Link to Publication

Report	UK R&D Skills Supply and Demand: long-term trends and workforce projections
Author	Kostas Kollydas, City-REDI
Published	June 2025
	This report is the product of a research collaboration between City-REDI/WMREDI and the Department for Science, Innovation and Technology (DSIT). It provides an in-depth analysis of the UK's R&D workforce, exploring regional and demographic patterns, skills shortages, employer perspectives, and future workforce projections.
	Link to Publication

Report	Public sector relocation: lessons from the BBC's move to Salford
Author	Max Nathan, Henry G. Overman, Capucine Riom and Maria Sanchez-Vidal, Centre for Economic Performance
Published	June 2025
	Moving public agencies out of London was a major plank of the levelling-up agenda. Max Nathan, Henry Overman, Capucine Riom and Maria Sanchez-Vidal show how the BBC's move to Salford had a positive effect on the local economy, albeit one that was smaller than expected.
	Link to Publication

Report	Health starts in the neighbourhood
Author	Local Trust
Published	June 2025
	<p>This paper is based on the idea that conditions for good health are shaped by the communities where people live. It proposes three key shifts to rebalance the system toward prevention and giving communities a stronger voice.</p> <p>Link to Publication</p>
Report	Society Watch: Delivering the Government's Devolution Revolution
Author	National Centre for Social Research
Published	May 2025
	<p>This policy briefing from NatCen offers insights into public attitudes towards devolution, following a deliberative workshop with Sussex residents.</p> <p>Link to Publication</p>
Report	A more collaborative way of governing? Why the UK's Council of the Nations and Regions matters
Author	Alex Walker, Michael Kenny and Dewi Knight, Bennett Institute for Public Policy
Published	May 2025
	<p>This report from the Bennett Institute and PolicyWISE provides the first substantial examination of this flagship intergovernmental initiative.</p> <p>Link to Publication</p>
Report	This report by Power to Change argues that visible local decline matters to people when they head to the polls.
Author	Jessica Craig, Linda Hien, Lucy Symington and Nick Plumb, Power to Change
Published	May 2025
	<p>This report by Power to Change argues that visible local decline matters to people when they head to the polls.</p> <p>Link to Publication</p>
Report	The Social Value of Tourism
Author	Visit Britain
Published	May 2025
	<p>A report from Visit Britain reveals the positive cultural and social impacts that tourism has on local communities across the UK.</p> <p>Link to Publication</p>
Report	The case for Total Place 2.0
Author	Stuart Hoddinott and Nick Davies, Institute for Government
Published	May 2025
	<p>A report by the Institute of Government asking what the government can learn from Total Place.</p> <p>Link to Publication</p>
Report	The Opportunity Index
Author	Eric Holt-White, Carl Cullinane and Rebecca Montacute, The Sutton Trust

Published	May 2025
	In this report, the Sutton Trust provide the most detailed ever look at the geography of opportunity and social mobility in England. Link to Publication
Report	How academic-policy engagement has developed
Author	UPEN
Published	May 2025
	Timeline from UPEN shows the development of academic-policy engagement and the growth of interest in using evidence to support public policy over the last 25 years. Link to Publication
Report	The academic-policy ecosystem
Author	UPEN
Published	May 2025
	An interactive map from UPEN shows the current organisations, bodies, networks and roles that make up the ecosystem of UK academic policy engagement. Link to Publication
Report	A more collaborative way of governing? Why the UK's Council of the Nations and Regions matters
Author	Michael Kenny, Alex Walker and Dewi Knight, Bennett Institute for Public Policy
Published	May 2025
	A new report highlights the importance of the Council of the Nations and Regions in advancing UK devolution—gaining media attention as the Council convenes for its second meeting. Link to Publication
Report	Where people meet
Author	Summer Simpson and Sara Masters, New Local
Published	May 2025
	This report sets out what can be achieved if we celebrate, sustain and reimagine community centres for the future. It makes the case for meaningful investment, effort and focus at both the national and local level to dismantle the challenges standing in their way. It calls for their true value to be recognised and nurtured. Link to Publication
Report	Filling the gaps
Author	Centre for Local Economic Strategies
Published	May 2025
	This research, conducted by the Centre for Local Economic Strategies (CLES), explores the processes, barriers and support mechanisms for small businesses sourcing premises in Wales' town centres. Link to Publication
Report	Improving public funding allocation to reduce geographical inequalities

Author	Charlotte Hoole, Andy Pike, Anne Green, Sheela Agarwal, Sarah Ayres, Ceri Davies, Jonathan Davies, Mike Emmerich, James Gilmour, Daniel H Mutibwa, Megan Russell, Abigail Taylor and Sanne Velthuis
Published	May 2025
	<p>This report proposes improved ways to allocate public funding within and between different areas in England to reduce geographical inequalities and enable more places to contribute meaningfully to national economic growth and renewal.</p> <p>Link to Publication</p>
Report	Megatrends and regions: a case study of the English Midlands
Author	Matt Lyons, Charlotte Hoole and Anne Green, City-REDI
Published	May 2025
	<p>The research provides an updated view of global megatrends and their importance and impact at a regional scale.</p> <p>Link to Publication</p>
Report	Measuring social and cultural infrastructure
Author	Dimitrios Panayotopoulos-Tsiros, Owen Garling, Rosa Marks, Anna Alexandrova, Diane Coyle and Michael Kenny, The British Academy and Bennett Institute for Public Policy
Published	April 2025
	<p>This report, by the Bennett Institute, presents a year-long exploration into measuring social and cultural infrastructure, developing a framework that highlights its core role in community life and offers practical applications for various stakeholders including policymakers, funders and those people involved in the provision and maintenance of these key assets.</p> <p>Link to Publication</p>
Report	Innovation in the West Midlands: international prospects and place partners
Author	Connected Places Catapult
Published	April 2025
	<p>This report by the Connected Places Catapult explores potential partners and principles for a place-based global collaboration strategy for the West Midlands and its local authorities.</p> <p>Link to Publication</p>
Report	The myth of “left behind”
Author	Yunze Wang, Centre for Cities
Published	April 2025
	<p>This report from the Centre for Cities looks at why a city-focused industrial strategy will not increase place-based discontent.</p> <p>Link to Publication</p>
Report	Financing local net zero: policy paper
Author	London Councils
Published	April 2025
	<p>This policy paper evaluates local borrowing and national funding and financing options in the context of the relative financial frameworks available to local and national government. The second phase of the research examines private and blended finance options, and will be the subject of a future paper.</p>

[Link to Publication](#)

Report	Geographically Concentrating Or Spreading Public Funding
Author	Andy Pike, Anne Green and Shona Duncan
Published	April 2025
	This report explores the advantages and disadvantages of concentrating versus spreading public funding across different geographical areas.
	Link to Publication

Events

Report Launch	Enabling Regional Growth: Institutional and Fiscal Lessons from England and Japan – CIPFA and City-REDI
26th June 11:00pm – 12:30pm	Join CIPFA and City-REDI for the launch of a landmark comparative study exploring how Birmingham and Osaka – two second cities on opposite sides of the world – are tackling regional growth through devolution and collaboration. This timely event will offer fresh, globally informed insights for policymakers navigating the UK and Japan’s evolving regional agenda, with expert commentary and international perspectives that resonate with today’s urgent policy challenges.
	Register here
Conference	Y-PERN 2025 Conference: Bridging Academia and Policymaking
27th June 9:00am – 3:30pm	The conference will bring together leading academics, policymakers, and practitioners to explore innovative approaches to incorporating academic research into impactful policies. With confirmed speakers including Tracy Brabin, Mayor of West Yorkshire, and Robin Tuddenham, Chief Executive of Calderdale Council and President of Solace, the day will include stimulating panel discussions, insightful case studies, and interactive sessions aimed at fostering meaningful dialogue and collaboration. These activities will help us explore ways to achieve multi-level growth, promoting fairer, greener, and more inclusive futures.
	Register here
Conference	WISERD Annual Conference 2025
30th June and 1st July	The theme for the WISERD Annual Conference 2025 talks to widespread concerns regarding the form and function of civil society in a period marked by social, political and economic discontent and upheaval at local, regional, national and global scales.
	Register here
Feedback Event	Civic Impact Dashboard user feedback event
1st July 11:00am – 12:30pm	As part of the National Civic Impact Accelerator programme, we have been working with a user testing group since August 2024 and sharing the progress of our user-centred design journey to develop the Civic Impact Dashboard prototype. The prototype launched in March 2025, and we welcome feedback from a wider range of potential users, so we can help ensure the dashboard fully and meaningfully supports High Education Institution’s (HEIs) to conduct

comprehensive civic impact assessments. If understanding data-driven civic impact matters to you, please join our workshop, where we'll be sharing a demonstration of the dashboard prototype, and working together to identify key areas for improvement, making sure the tool meets real-world needs, and that it's as accessible, usable and functional as we can make it.

[Register here](#)

Conference 1st July to 3rd July	Local Government Association Conference: Empowering people, empowering places <p>As local government faces the biggest set of changes in over half a century, this year's LGA Annual Conference and Exhibition comes at a pivotal moment. Navigating these changes, councils confront increasingly complex community needs and inequalities, rising costs and static income within a challenging economic landscape and an accelerating pace of technology that will transform how we all live, work and deliver services. Looking toward 2030 and beyond, we'll explore bold strategies to empower people and places - harnessing innovation, embracing new technologies, reimagining service delivery and giving communities a say in how their councils are organised, led and run.</p> <p>Register here</p>
Summit 3rd July	Community Wealth Building Summit 2025 – Centre for Local Economic Strategies <p>The Community Wealth Building (CWB) Summit 2025 is the UK's leading event dedicated to building better local economies. This year we will bring together local economic changemakers, place leaders, grassroots innovators and policymakers to explore how both community wealth building and changes in local democracy can open up opportunities for communities to own the future of their local economies.</p> <p>Register here</p>
Event 3rd July 5:00pm – 6:30pm	Investing in the Midlands and the North – The Productivity Institute <p>The Productivity Institute and Royal Economic Society are bringing together stakeholders to discuss challenges and opportunities in driving economic growth and development in these areas.</p> <p>Register here</p>
Online Event 10th July 1:00pm - 2:00pm	How to Design a Strategic Authority – New Local <p>This event is part of our ongoing offer to members, supporting local leaders and partners to navigate – and shape – the next chapter of the UK's devolution story.</p> <p>Register here</p>
Conference 4th to 5th September	Productivity Research Conference 2025 – The Productivity Institute <p>The Productivity Institute invites researchers, policy professionals and the wider public to join us for our flagship international conference on productivity, taking place in person at The University of Manchester. Over two packed days, leading thinkers will explore the forces shaping productivity across economies, industries and societies, from digital transformation and sustainability to innovation, skills and governance.</p>
Online Event 10th September	Strategy Lab: Moving forward policy and practice on place-based prevention – New Local <p>This session is for senior local government officers to share opportunities, challenges and learning on how to make progress towards developing a more prevention-focused local system.</p>

09:30am –
11:00am

[Register here](#)

Conference
14th to 15th
October

CiviCon 2025 – Civic University Network and National Civic Impact Accelerator

Join professionals, academics, and senior leaders from higher education institutions and civic partners to explore exemplary initiatives and gain practical tools for civic engagement. This event is ideal for higher education institutions, including academics, researchers, professional services staff, and civic teams, as well as external partners such as Combined Authorities, NHS Trusts, Civil Service, and community stakeholders.

[Register here](#)

Disclaimer: The contents of this document are based on the latest data available and the contribution of partners in a fast-paced environment, therefore we urge caution in its use and application

For any queries, please contact the lead Authors:

Alice Pugh A.Pugh@Bham.ac.uk

Abigail Taylor A.Taylor.7@bham.ac.uk

Rebecca Riley R.Riley@Bham.ac.uk

Anne Green A.E.Green.1@bham.ac.uk



The Local Policy Innovation Partnership Hub is funded by the UKRI

