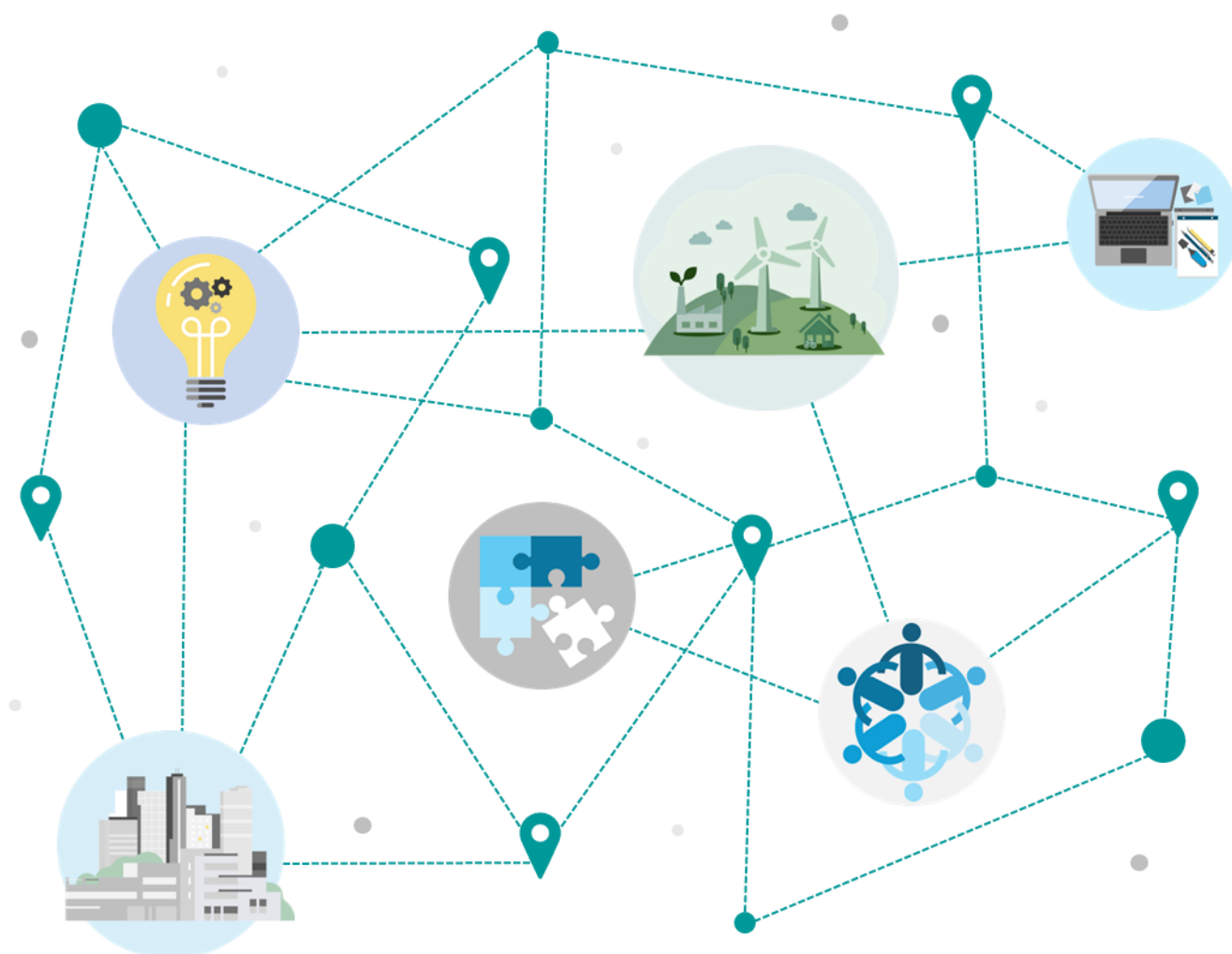


The Local Policy Innovation Partnership (LPIP) Hub seeks to address nationwide issues through local partnership and place. The LPIP Hub programme has been designed to support local and national policymakers in tackling place-based challenges, driving sustainable and inclusive economic growth and reducing regional disparities in the UK.

Policy Innovate aims to pull together and disseminate the work of the LPIP programme and wider relevant research. With the aim of providing evidence around building confidence, capacity and capability in an effective service-driven approach to place-based policy making and public service delivery.



Contents

LPIP Publications .....3

External Publications .....6

Events ..... 11

## LPIP Hub Publications

This section sets out some of the blogs that have been produced as part of the LPIP Hub programme.

<b>Blog</b>	<b>The Hidden Glue: The People Behind the Scenes of Collaborative Partnerships</b>
<b>Author</b>	<b>Elizabeth Goodyear, LPIP Hub</b>
	Elizabeth Goodyear highlights how the unsung individuals—boundary-spanners, knowledge mobilisers, and empathetic leaders—are the hidden glue holding successful university-community partnerships together through their essential, often unrecognised relational work.
	<a href="#">Link to publication</a>
<b>Blog</b>	<b>Why the LPIP Hub Needs a Common Language: Introducing Our Glossary of Terms</b>
<b>Author</b>	<b>Elizabeth Goodyear, LPIP Hub</b>
	Elizabeth Goodyear introduces the LPIP Hub’s new glossary as a vital step toward building a shared language that strengthens collaboration across diverse sectors in place-based policy innovation.
	<a href="#">Link to publication</a>
<b>Blog</b>	<b>Responding to Richard Jones: Civic Engagement in Practice at City-REDI and the University of Birmingham</b>
<b>Author</b>	<b>Rebecca Riley, LPIP Hub</b>
	In this response to Richard Jones’ blog, Rebecca Riley highlights how the University of Birmingham is putting civic engagement into practice through City-REDI, the Local Policy Innovation Partnership (LPIP) Hub, and its Civic Agreement. Showing how universities can play a vital role in tackling regional inequality and supporting local growth.
	<a href="#">Link to publication</a>
<b>Blog</b>	<b>Beyond Benchmarks: Reflections from Regional Studies Association Conference Session on Culture, Communities and Infrastructure in Place-Based Policy</b>
<b>Author</b>	<b>Sara Hassan and Abigail Gilmore, LPIP Hub</b>
	At the recent RSA session “Culture, Communities and Infrastructure: Building Capacity, Capability and Confidence in Place,” Dr Sara Hassan and Professor Abi Gilmore brought together a group of researchers, engagement and knowledge exchange managers to explore exactly this question. Co-convened by colleagues at the University of Birmingham and drawing on the research of the UKRI Local Policy Innovation Partnerships (LPIPs) and its Strategic Hub, the session revealed both the promise and complexity of building meaningful, inclusive cultural policy grounded in place. In this blog, we reflect jointly on the themes that resonated most and consider how they can inform future partnership working, evaluation, and governance across the cultural policy landscape.
	<a href="#">Link to publication</a>
<b>Blog</b>	<b>Putting the Local in Local Growth Plans</b>
<b>Author</b>	<b>Jessica Craig, Power to Change</b>
	Jessica Craig from Power to Change writes about how government and combined authorities can foster inclusive growth through the social economy.
	<a href="#">Link to publication</a>

<b>Blog</b>	<b>Inclusive and Sustainable Local Economic Performance: What Place-Based Leaders can do Next</b>
<b>Author</b>	<b>Jamie Ounan, Inner Circle</b>
	<p>Jamie Ounan calls for local authorities to lead economic transformation through mission-based approaches—focusing on bold, long-term goals, collaboration, and aligning resources to community needs—to achieve fairer, greener, and more inclusive local economies.</p> <p><a href="#">Link to publication</a></p>
<b>Paper</b>	<b>Geographic Inequalities in an Era of Unequal Devolution</b>
<b>Author</b>	<b>Charlotte Hoole, LPIP Hub and Jack Newman, TRUUD</b>
	<p>The UK has historically failed to learn important lessons from European countries on spatial rebalancing. It has recently acknowledged the need for effective local institutions and a long-term national strategy, but its asymmetric approach is unlikely to reduce geographic inequality.</p> <p><a href="#">Link to publication</a></p>
<b>Blog</b>	<b>Mapping the Future of Civic University Engagement: Introducing the Civic 6 Framework</b>
<b>Author</b>	<b>Rebecca Riley, LPIP Hub</b>
	<p>Rebecca Riley introduces the <b>Civic 6 Framework</b>—a tool designed to help UK universities reflect on and strengthen their civic and policy engagement. It outlines six models of engagement, from regionally embedded institutes to national think tanks, offering a flexible structure for aligning institutional strategies with local and national priorities. The framework supports self-assessment, stakeholder consultation, and sector-wide collaboration, aiming to evolve with the changing landscape of civic university activity.</p> <p><a href="#">Link to publication</a></p>
<b>Blog</b>	<b>Making Sense of Just Transition in City and Regional Policy-Making</b>
<b>Author</b>	<b>Will Eadson, Sheffield Hallam University</b>
	<p>Will Eadson explores how policymakers in South Yorkshire interpret and implement the concept of a just transition—the idea that the shift to a low-carbon economy must be fair and inclusive. Drawing on research using Q-methodology, the study reveals how different stakeholders conceptualise justice, change, and transformation.</p> <p><a href="#">Link to publication</a></p>
<b>Report</b>	<b>Exploring the Concept of Governance Capacity</b>
<b>Author</b>	<b>Charlotte Hoole, LPIP Hub</b>
	<p>This short report summarises the findings from a Local Policy Innovation Partnership (LPIP) Hub workshop carried out to explore the concept of governance capacity as a critical enabler of effective regional development and inclusive growth. Hosted by the LPIP Hub and led by Dr Charlotte Hoole, the session brought together stakeholders from across the UK's four LPIPs to examine how governance capacity is defined, measured, and distributed. The discussion aimed to unpack the complexities of sub-national governance, particularly in the context of ongoing reforms in England and the growing interest in mission-driven government. Participants were encouraged to reflect on the meaning of governance capacity, the feasibility and value of measuring it, and how it is unevenly distributed across regions and actors.</p> <p><a href="#">Link to publication</a></p>

## LPIPs Publications

<b>Report</b>	<b>Policy-focused Research for Rural Wales</b>
<b>Author</b>	<b>Cymru Wledig LPIP Rural Wales</b>
	Introducing the Rural Wales Local Policy and Innovation Partnership.  <a href="#">Link to publication</a>
<b>Report</b>	<b>Annual Report 2025</b>
<b>Author</b>	<b>Cymru Wledig LPIP Rural Wales</b>
	This annual report delves into the research that the LPIP has produced since the launch of the LPIP in July 2024.  <a href="#">Link to publication</a>
<b>Report</b>	<b>Perceptions of Growth in two Welsh Market Towns</b>
<b>Author</b>	<b>Cymru Wledig LPIP Rural Wales</b>
	The aim of this research was to identify how growth, in terms of business and community development, is perceived by those living and working in rural towns in Wales. Case studies of Llanidloes (Mid Wales) and Llangefni (North Wales) were used to explore perceptions of growth and how enterprise can be supported in these locations, through a better understanding of what growth and development means to those living there.  <a href="#">Link to publication</a>
<b>Blog</b>	<b>Emerging Business Opportunities for a Water-Resilient Future in the Forth Region</b>
<b>Author</b>	<b>Forth20 LPIP</b>
	What if water could be the key to unlocking a thriving economy in the Forth region? The FORTH20 Business & Industry Core Team, part of the cross-sector FORTH20 Policy Innovation Partnership, is investigating how sustainable water use can drive innovation. Through focused discussions, we're uncovering bold opportunities: Decentralised water-energy systems, water-inspired tourism, and smarter water management. Discover how science and local collaboration are shaping a resilient, prosperous future.  <a href="#">Link to publication</a>

## External Publications

This section sets out recently released report and research, relevant to the work of the LPIP Hub, LPIPs and partners.

<b>Report</b>	<b>Neighbouring Data: Three Reports on the Data Observatory</b>
<b>Author</b>	<b>University of Southampton</b>
<b>Published</b>	<b>September 2025</b>
	<p>This report connects our previous findings to a three-part research collaboration that includes commissioning creative responses and hosting an artists' workshop, consulting with professional data users on their aspirations for qualitative data, and developing prototypes for the Neighbourhood Insight Engine. We moved away from an observatory model to introducing the engine as a platform that enables place-based conversations and decision-making using qualitative data.</p> <p><a href="#">Link to Publication</a></p>
<b>Report</b>	<b>Policy landscape 2025</b>
<b>Author</b>	<b>Resolution Foundation</b>
<b>Published</b>	<b>September 2025</b>
	<p>As Parliament returns from its summer recess, the Resolution Foundation and UK in a Changing Europe have partnered to produce the Policy Landscape 2025 report – a series of evidence-led, research-based assessments of the main policy challenges facing the UK, and how politicians could respond.</p> <p><a href="#">Link to Publication</a></p>
<b>Report</b>	<b>New house rules: the case for devolving Homes England</b>
<b>Author</b>	<b>RE: State</b>
<b>Published</b>	<b>August 2025</b>
	<p>This report focuses on one specific ALB: Homes England. It sets out the case for a radical restructure of the Government's housing and regeneration system, replacing Homes England with locally-led institutions.</p> <p><a href="#">Link to Publication</a></p>
<b>Report</b>	<b>Why place matters: neighbourhood effects on crime and anti-social behaviour</b>
<b>Author</b>	<b>Independent Commission on Neighbourhoods</b>
<b>Published</b>	<b>August 2025</b>
	<p>This report explores the effects that neighbourhoods have on crime and anti-social behaviour, and the policy implications of this analysis, through an evidence and policy review.</p> <p><a href="#">Link to Publication</a></p>
<b>Report</b>	<b>How Can Urban Wealth Funds and Regional Wealth Funds Help UK Regions to Rejuvenate?</b>
<b>Author</b>	<b>National Institute for Economic and Social Research</b>
<b>Published</b>	<b>August 2025</b>
	<p>This paper examines the case for, and context in which, an urban wealth fund (UWF) or a regional wealth fund (RWF), can realistically and meaningfully be established in UK cities and regions in a manner which helps to encourage investment capital back into economically weaker regions.</p>

<b>Report</b>	<b>Sustainable Communities: Findings from the resident interviews</b>
<b>Author</b>	<b>London School of Economics</b>
<b>Published</b>	<b>August 2025</b>

This report presents headline findings from interviews with 100 residents living in ten low-income neighbourhoods across England. This is the first in a series of reports summarising our current research into the areas. The research revisits the neighbourhoods included in CASE's Areas Study carried out between 1998 and 2008. It explores how these communities have changed since 2008, assesses their social, economic, and environmental sustainability, and explores how residents feel about their neighbourhoods and how the areas could be improved.

[Link to Publication](#)

<b>Report</b>	<b>Centralisation, local decline and the future of community power</b>
<b>Author</b>	<b>Localis</b>
<b>Published</b>	<b>July 2025</b>

Ever since the radical restructuring of public finances that heralded the beginning of austerity policy in 2010, successive governments have promised to balance their policy agendas with a commensurate uptick in control for local communities. The language of “big society”, “taking back control”, “levelling up” and now the “community empowerment” element of the English Devolution and Community Empowerment Bill invoke a commitment to get power down to the neighbourhood level. In this piece, Localis senior researcher Callin McLinden examines the attempts to translate rhetoric to policy and looks ahead to mechanisms that can be used by government to engender real community control.

[Link to Publication](#)

<b>Report</b>	<b>How Universities Can Help Drive Local and Regional Economies</b>
<b>Author</b>	<b>Institute for Economic Development</b>
<b>Published</b>	<b>July 2025</b>

A new report by the Institute of Economic Development (iED) and AtkinsRéalis “puts universities at the centre of the debate on how to generate growth in local and regional economies with national impact”. It is critical that government incentivises higher education and local government to focus on economic development, through policy guidance, capacity building, and budgets, the co-authors say.

[Link to Publication](#)

<b>Report</b>	<b>Y-PERN's 2025 Impact Report</b>
<b>Author</b>	<b>Y-PERN</b>
<b>Published</b>	<b>June 2025</b>

Y-PERN's 2025 Impact Report showcases three years of close collaboration between the region's universities and policymakers that has transformed evidence-based decision-making across Yorkshire and the Humber.

[Link to Publication](#)

<b>Report</b>	<b>Inclusive Practice in Knowledge Mobilisation: finding people and expertise to meet policy evidence needs</b>
<b>Author</b>	<b>Capabilities in Academic Policy Engagement</b>
<b>Published</b>	<b>July 2025</b>

A guide for knowledge mobilisers and those who work at the interface between universities and public policy organisations to respond to requests for evidence and expertise from policymakers in more inclusive and purposeful ways.

[Link to Publication](#)

<b>Report</b>	<b>The State of Us: Community strength and cohesion in the UK</b>
<b>Author</b>	<b>British Future</b>
<b>Published</b>	<b>July 2025</b>
	The report, by British Future and the Belong Network, details a combination of social tensions and grievances, including polarisation and division, concerns about asylum and immigration, declining political trust and economic pessimism. The authors warn that unrest risks being reignited unless urgent action is taken. They also identify some strong foundations on which to build, including public confidence in cohesion at neighbourhood level and numerous examples of impactful work across the UK to empower communities, build shared identities and strengthen relationships between people from different backgrounds.

[Link to Publication](#)

<b>Report</b>	<b>Skills and Employment Briefing - Designing local and regional skills and employment strategies: advice for Combined and Local Authorities</b>
<b>Author</b>	<b>Sheffield Hallam University - Centre for Regional Economic and Social Research (CRESR)</b>
<b>Published</b>	<b>July 2025</b>
	This briefing paper provides an overview of current UK skills and employment policy, considers the challenges in addressing the low skills equilibrium which many places face, reviews the evidence available to improve skills-related labour market challenges and gives a series of recommendations to local and regional policy makers.

[Link to Publication](#)

<b>Report</b>	<b>The Potential Role of Devolution to Combined Authorities</b>
<b>Author</b>	<b>University College London</b>
<b>Published</b>	<b>July 2025</b>
	This paper combines missions theory with wider evolutionary economic thinking on managing complexity to argue that devolution in England could be a critical enabler for economic growth. The paper argues that the Government could realise the opportunity devolution offers by creating a multi-level governance system designed to create conditions of 'directed improvisation'.

[Link to Publication](#)

<b>Report</b>	<b>State of the North 2025 - The kids aren't alright: How to deliver for young people in the North</b>
<b>Author</b>	<b>IPPR</b>
<b>Published</b>	<b>July 2025</b>
	This year's State of the North report highlights how regional inequality exacerbates the growing challenges facing many young northerners.

[Link to Publication](#)

<b>Report</b>	<b>Mapping the Landscape of Place-Based Initiatives in England, 2019-2025</b>
<b>Author</b>	<b>Independent Commission on Neighbourhoods</b>



<b>Published</b>	<b>July 2025</b>
	<p>From the late 1990s to the late 2000s, neighbourhood regeneration in the UK has been carried out through a range of different policies and initiatives. These initiatives have often sought to holistically integrate economic, social, and environmental challenges. This paper explores place based initiatives over the last few years, offering an overview of some of the PBIs that have been proposed, implemented, or continued by governments from 2019 to the present day. This paper sets out key lessons for policy makers, drawing from the learnings of previous PBIs.</p> <p><a href="#">Link to Publication</a></p>
<b>Report</b>	<b>The Good Work Time Series 2025</b>
<b>Author</b>	<b>Institute for the Future of Work</b>
<b>Published</b>	<b>July 2025</b>
	<p>The Good Work Monitor Time Series tracks trends in access to good work across local authorities in England, Scotland and Wales. This unique view over time is designed to help policymakers at all levels of government identify the most effective ways to improve economic, technological, social and health outcomes together.</p> <p><a href="#">Link to Publication</a></p>
<b>Report</b>	<b>Devolution and Reform</b>
<b>Author</b>	<b>County Council Network</b>
<b>Published</b>	<b>July 2025</b>
	<p>CCN's recently-commissioned report from Oxford Economics shows that devolution of full public spending to county areas could create 1bn new jobs in the next decade, generate 26bn extra for the national economy, and deliver £11.7bn in savings per year over a five year period. CCN was the lone voice in successfully arguing against the imposition of directly-elected mayors as a requirement in devolution deals. Now, we will continue to develop a new narrative on county devolution, aiming to illustrate the benefits of deals based around county geographies, their scale, and the local leadership in place already. We will argue for a more open, transparent, and structured approach to devolution, with accompanying framework.</p> <p><a href="#">Link to Publication</a></p>
<b>Report</b>	<b>The state of intergovernmental relations in England</b>
<b>Author</b>	<b>Heseltine Institute for Public Policy, Practice and Place</b>
<b>Published</b>	<b>July 2025</b>
	<p>How do MCAs work with UK government in practice? This report by Dr Paul Anderson (Senior Lecturer in Politics at Liverpool John Moores University and Heseltine Institute Visiting Fellow) and Dr Tom Arnold (Research Associate at the Heseltine Institute) explores Intergovernmental Relations (IGR) in England – the ‘plumbing’ of government in multi-level systems such as the UK. Drawing on dozens of in-depth interviews with regional politicians, local government officials and civil servants.</p> <p><a href="#">Link to Publication</a></p>
<b>Report</b>	<b>Rewiring Local Government for Citizen Engagement</b>
<b>Author</b>	<b>INLOGOV Blog</b>
<b>Published</b>	<b>July 2025</b>

The Institute of Local Government Studies (INLOGOV) has published a new report, Rewiring Local Government for Citizen Engagement, which sets out a compelling case for reimagining the relationship between local authorities and the communities they serve. At a time of structural reform, fiscal constraint and lower public trust, the report argues that citizen engagement must become fully embedded local governance, rather than a peripheral activity.

[Link to Publication](#)

<b>Report</b>	<b>Everybody needs good neighbourhoods 2</b>
<b>Author</b>	<b>Local Trust</b>
<b>Published</b>	<b>July 2025</b>
	This joint report by Local Trust, 3ni, Shared Intelligence, and OCSI, makes a case for sustained, resident-led investment in the most disadvantaged neighbourhoods. It presents strong evidence that empowering residents to lead local change strengthens local economies, lowers child poverty and reduces crime.
	<a href="#">Link to Publication</a>

<b>Report</b>	<b>Checking out: The varying performance of high streets across the country</b>
<b>Author</b>	<b>Centre for Cities</b>
<b>Published</b>	<b>July 2025</b>
	This report identifies four key reasons why high street vacancy rates vary so much from city to city and how to improve their fortunes.
	<a href="#">Link to Publication</a>

<b>Report</b>	<b>Knowledge in action</b>
<b>Author</b>	<b>Institute for Community Studies</b>
<b>Published</b>	<b>July 2025</b>
	This report explores how universities, local authorities, and community organisations can work together more effectively to shape place-based policy. Delivered by the Institute for Community Studies in collaboration with UCL-CAPE, the project examined the practical and cultural conditions that support successful collaboration across sectors.
	<a href="#">Link to Publication</a>

<b>Report</b>	<b>Trusting place: Improving the lives of local people through place-based approaches</b>
<b>Author</b>	<b>July 2025</b>
<b>Published</b>	<b>Local Government Association</b>
	This report sets out recommendations to inform the Local Government Association's (LGA) dialogue with government and its members in support of 'place-based' approaches to public services.
	<a href="#">Link to Publication</a>

<b>Report</b>	<b>Guarantee of Potential place-based employment support in a new local policy ecosystem</b>
<b>Author</b>	<b>Localis</b>
<b>Published</b>	<b>July 2025</b>

Tackling worklessness, long a stated goal yet persistently unmet by government, has become a structural crisis demanding locally driven reform. With over nine million economically inactive working-age adults, the challenge stems from overlapping issues: long-term illness, regional inequality, and fragmented support services. Centralised, siloed approaches have proven insufficient. *Guarantee of Potential* argues that local authorities, empowered through the Get Britain Working white paper and recent Spending Review, must now lead the response. By devolving funding, aligning employment with health and skills services, and commissioning strategically, councils can build coherent place-responsive systems that make good work accessible and unlock the potential of residents, advancing both economic inclusion and national renewal.

[Link to Publication](#)

<b>Report</b>	<b>How strategic authorities can develop effective local economic plans: Making devolution work</b>
<b>Author</b>	<b>Institute for Government</b>
<b>Published</b>	<b>June 2025</b>
	This report, produced in partnership with the University of Surrey, explores how strategic authorities can develop effective economic strategies tailored to their specific contexts, and provides insights for local leaders and officials seeking to develop robust local economic strategies and strengthen their local economies.
	<a href="#">Link to Publication</a>

## Events

<b>Webinar</b> <b>2<sup>nd</sup> October</b>	<b>Making use of logic models: practical training for local economic growth</b> A What Works Centre for Local Economic Growth 2.5-hour workshop designed to help people working in local economic growth use logic models effectively. <a href="#">Register here</a>
<b>Conference</b> <b>14<sup>th</sup> to 15<sup>th</sup> October</b>	<b>CiviCon 2025 – Civic University Network and National Civic Impact Accelerator</b> Join professionals, academics, and senior leaders from higher education institutions and civic partners to explore exemplary initiatives and gain practical tools for civic engagement. This event is ideal for higher education institutions, including academics, researchers, professional services staff, and civic teams, as well as external partners such as Combined Authorities, NHS Trusts, Civil Service, and community stakeholders. <a href="#">Register here</a>
<b>Webinar</b> <b>20<sup>th</sup> October</b>	<b>Understanding data for local economies</b> A What Works Centre for Local Economic Growth 2.5 hour course designed to help local and central government staff use efficiently available data on local economic growth <a href="#">Register here</a>

Disclaimer: The contents of this document are based on the latest data available and the contribution of partners in a fast-paced environment, therefore we urge caution in its use and application

For any queries, please contact the lead Authors:

Alice Pugh [A.Pugh@Bham.ac.uk](mailto:A.Pugh@Bham.ac.uk)

Abigail Taylor [A.Taylor.7@bham.ac.uk](mailto:A.Taylor.7@bham.ac.uk)

Rebecca Riley [R.Riley@Bham.ac.uk](mailto:R.Riley@Bham.ac.uk)

Anne Green [A.E.Green.1@bham.ac.uk](mailto:A.E.Green.1@bham.ac.uk)



UNIVERSITY OF  
BIRMINGHAM

BIRMINGHAM  
BUSINESS  
SCHOOL



The Local Policy Innovation Partnership Hub is funded by the UKRI

UNIVERSITY OF  
BIRMINGHAM



**CLES**  
the national organisation  
for local economies



LONDON  
SCHOOL of  
HYGIENE  
& TROPICAL  
MEDICINE



QUEEN'S  
UNIVERSITY  
BELFAST

COMMUNITIES  
AND PLACE



UNIVERSITY  
of York



University  
of Exeter



University  
of Glasgow

MANCHESTER  
1824  
The University of Manchester



University of  
St Andrews

