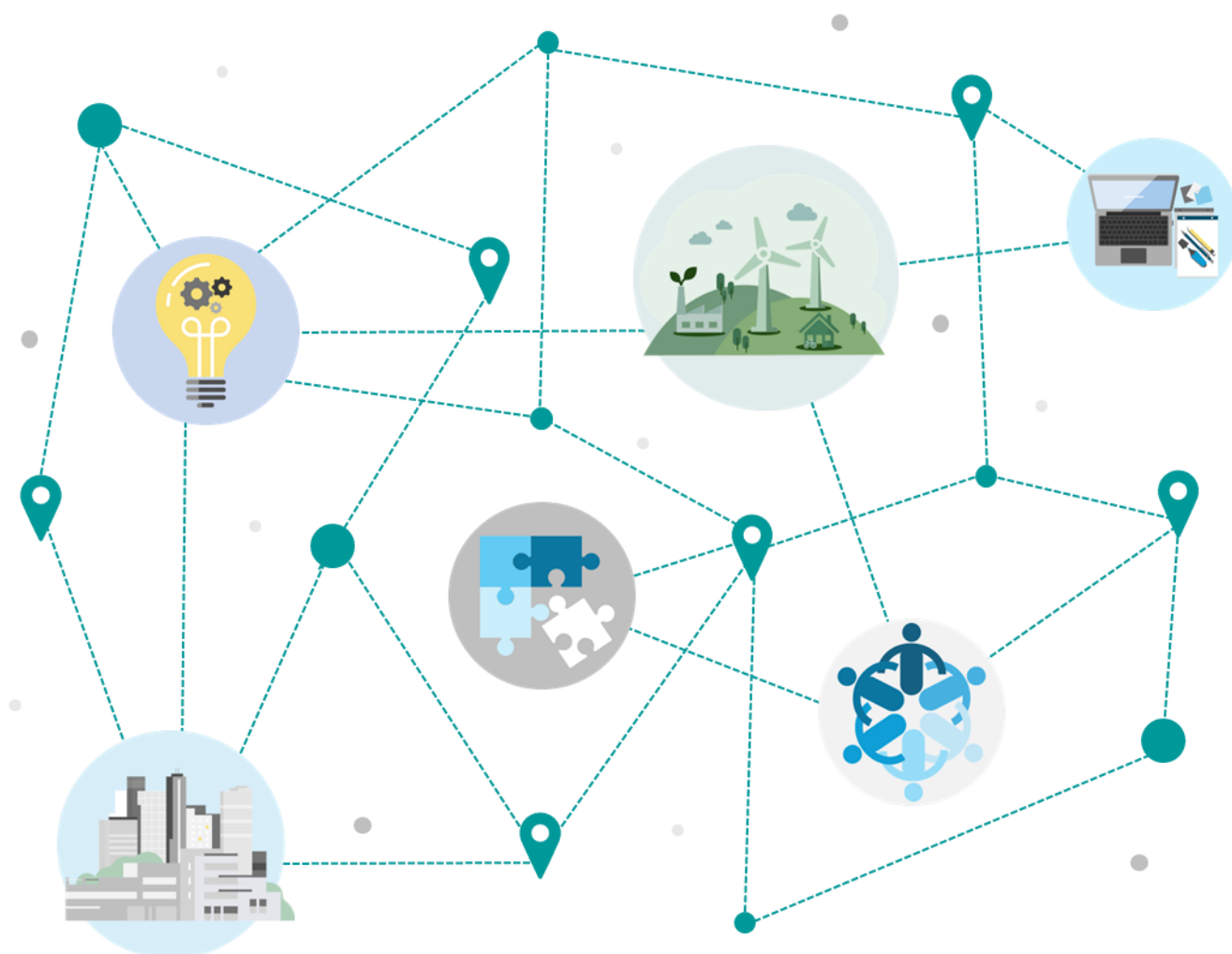


The Local Policy Innovation Partnership (LPIP) Hub seeks to address nationwide issues through local partnership and place. The LPIP Hub programme has been designed to support local and national policymakers in tackling place-based challenges, driving sustainable and inclusive economic growth and reducing regional disparities in the UK.

Policy Innovate aims to pull together and disseminate the work of the LPIP programme and wider relevant research. With the aim of providing evidence around building confidence, capacity and capability in an effective service-driven approach to place-based policy making and public service delivery.



Contents

LPIP Publications .....3

External Publications .....9

Events ..... 14

## LPIP Hub Publications

This section sets out some of the blogs that have been produced as part of the LPIP Hub programme.

<b>Blog</b>	<b>Governing for Net zero? A British Academy Report and its value to Local Policy Making</b>
<b>Author</b>	<b>Jake Barnes, British Academy</b>
	On Tuesday 29 July the British Academy launched a new report <a href="#">Governance to Accelerate Net Zero</a> . The report draws attention to the importance of governance for transformative change and argues that enhancing eight governance mechanisms can accelerate progress towards net zero. In this blog Dr Jake Barnes introduces the report and reflects on its value for those innovating local policy making to deliver and scale solutions to local issues.
	<a href="#">Link to publication</a>
<b>Blog</b>	<b>Bridging Research and Real-World Impact: My Fellowship with LPIP Hub</b>
<b>Author</b>	<b>Sophie Cloutterbuck, Director of London Engagement and the London Met Lab at London Metropolitan University, and LPIP Hub Fellow</b>
	Earlier this year, <a href="#">the LPIP Hub celebrated the appointment of its Place Fellows</a> . In a series of blogs, the Place Fellows will introduce themselves and the work they have planned for the LPIP Hub. First up, Sophie Cloutterbuck, Director of London Engagement and the London Met Lab at London Metropolitan University.
	<a href="#">Link to publication</a>
<b>Report</b>	<b>The Seven Essentials of Effective Place-Based Growth: What Can the Government Learn From City-Region Mayors and Devolved Nations?</b>
<b>Author</b>	<b>Rebecca Riley, Director of the LPIP Hub</b>
	As the UK faces persistent regional inequalities, economic uncertainty, and the urgent need for a just transition to net zero, the case for a more empowered, locally driven approach to growth has never been stronger. This briefing sets out seven essential principles for effective place-based growth, drawing on the lived experience and emerging evidence from city-region mayors, devolved nations, the UKRI-funded Local Policy Innovation Partnership Hub and the four funded partnerships: Rural Wales, EPIC Northern Ireland, Forth2O (Scotland) and YPIP (Yorkshire).
	<a href="#">Link to publication</a>
<b>Blog</b>	<b>The Seven Essentials of Effective Place-Based Growth: Insights from the LPIP Hub Fringe Event</b>
<b>Author</b>	<b>Elizabeth Goodyear, LPIP Hub</b>
	At the Labour Party Conference Fringe Event, hosted by the Local Policy Innovation Partnership (LPIP) Hub and the Heseltine Institute for Public Policy, Practice and Place, a dynamic group of academics, policymakers, civic leaders, and elected officials came together to explore the future of place-based growth in the UK.
	<a href="#">Link to publication</a>
<b>Blog</b>	<b>Neighbouring Data: Three Reports on the Data Observatory</b>
<b>Author</b>	<b>Joseph Owens, AndTowns</b>
	Across three reports, Neighbouring Data has drawn together, animated, and analysed place-based data on pride, culture, heritage, health, and wellbeing. By analysing different types of

quantitative, qualitative and creative data collected from projects including Towns and the Cultural Economies of Recovery and Feeling Towns, we offer insights into the kinds of data that local authorities and communities need to inform their place-based decision-making.

[Link to publication](#)

<b>Blog</b>	<b>Lessons for a Place-Based Green Industrial Policy in the UK</b>
<b>Author</b>	<b>Ed Atkins, University of Bristol and LPIP Hub</b>
	Ed Atkins makes the case for new climate policies that boost local and regional economies. Ed is a Place Fellow at the Local Policy Innovation Partnership (LPIP) Hub. This blog introduces the work he will be undertaking for the LPIP Hub.
	<a href="#">Link to publication</a>

<b>Blog</b>	<b>Scaling Place-Based Innovation: Lessons From the WMREDI Partnership Model</b>
<b>Author</b>	<b>Rebecca Riley, Director of the LPIP Hub</b>
	The West Midlands Region Economic Development Institute (WMREDI), led by City-REDI, University of Birmingham, has been a transformative force in regional economic development. At its heart lies a unique partnership model—a collaborative framework that brought together universities, local authorities, businesses, and civic institutions to co-produce research, policy, and innovation.
	City-REDI is now leading the Local Policy Innovation Partnership Hub. This blog explores the WMREDI partnership model, how it worked, what made it successful, how it could be scaled and what lessons can be learned for those trying to develop local partnerships.
	<a href="#">Link to publication</a>

<b>Paper</b>	<b>Breaking the ‘Pretty Poverty’ Myth in Cornwall: Why Rural Deprivation Remains Hidden from Policy</b>
<b>Author</b>	<b>Tanya Ovenden-Hope, Dean of Place and Social Purpose at Plymouth Marjon University and Lead Researcher and Author of The Pretty Poverty Report.</b>
	Professor Tanya Ovenden-Hope explores how Cornwall’s scenic beauty masks deep-rooted deprivation that the government measurement, the Index of Multiple Deprivation (IMD) 2019, systematically underestimates. This blog discusses the findings of the Plymouth Marjon University, The Pretty Poverty Report: Cornwall Rurality Matters.
	<a href="#">Link to publication</a>

<b>Blog</b>	<b>Meet Kevin Fenning – Director, Evidence First, and LPIP Hub Fellow</b>
<b>Author</b>	<b>Kevin Fenning, Director at Evidence First and LPIP Hub Fellow</b>
	Earlier this year, the LPIP Hub celebrated the appointment of its Place Fellows. In a series of blogs, the Place Fellows will introduce themselves and the work they have planned for the LPIP Hub. In this blog Kevin Fenning, Director of Evidence First, introduces himself and the work that he will be doing at the LPIP Hub.
	<a href="#">Link to publication</a>

<b>Blog</b>	<b>Data, Housing, Culture, Vibes: What I’m bringing to the LPIP Hub</b>
<b>Author</b>	<b>Joseph Owen, University of Southampton and LPIP Hub Fellow</b>

Joseph Owen, Research Fellow from the University of Southampton, introduces the work he has planned during his place fellowship for the Local Policy Innovation Partnership Hub. View other introductory blogs from our Place Fellows.

[Link to publication](#)

<b>Report</b>	<b>A Long-Term Strategy for Housing: Lessons Learned on the Role of Institutions and Governance</b>
<b>Author</b>	<b>Linda Christie, Strategic Planning and Governance Lead SQS and LPIP Hub Fellow</b>
	<p>The UK Government has announced a £39 billion funding package and five-stage plan for social and affordable housing in England, with a comprehensive 10-year strategy due in 2025. This report reflects on the housing contexts of Scotland and England, drawing comparative lessons to strengthen institutional design, governance, and long-term planning for England's housing policy.</p> <p><a href="#">Link to publication</a></p>
<b>Report</b>	<b>Collaborative Innovation in Employment Policy: A Liverpool City Region Case Study</b>
<b>Author</b>	<b>Sue Jarvis, University of Liverpool's Heseltine Institute for Public Policy, Practice and Place and LPIP Hub Fellow</b>
	<p>This policy briefing explores how the Liverpool City Region has sustained employment policy innovation across decades of national change. Drawing on programmes such as the City Strategy Pathfinder, Youth Employment Gateway, and Households into Work, it shows how trust-based relationships, boundary-spanning roles, and collaborative governance have acted as an 'invisible thread' maintaining local capacity for innovation, learning, and co-production despite shifting national frameworks.</p> <p><a href="#">Link to publication</a></p>
<b>Report</b>	<b>Valuing What Matters: From Tick-Box to Stewardship – Reclaiming Social Value as a Driver of Trust, Equity, and Lasting Change</b>
<b>Author</b>	<b>Mark Swift, Founder and CEO of Wellbeing Enterprises CIC and LPIP Hub Fellow</b>
	<p>Mark Swift, LPIP Hub Place Fellow, argues that social value in public spending must move beyond compliance and tick-box exercises to a stewardship approach that embeds collaboration, citizen co-creation, and mission-driven investment to tackle inequalities and build resilient communities.</p> <p><a href="#">Link to publication</a></p>
<b>Blog</b>	<b>Business Cases for Environmental and Climate Change Projects</b>
<b>Author</b>	<b>Alice Pugh, LPIP Hub</b>
	<p>On 24 September, the Local Policy Innovation Partnership (LPIP) Hub and the Yorkshire Policy Innovation Partnership (YPIP) attended the Yorkshire and Humber Climate Change Commission Annual Convention to present on developing business cases for environmental and climate change projects. Here Alice discusses the event, discussing some of the questions that were raised and provides and insight into how these challenges can be tackled.</p> <p><a href="#">Link to publication</a></p>

**Report** | **Business Cases and Place-Based Funding**

<b>Author</b>	<b>Alice Pugh, LPIP Hub</b>
	<p>This report critically examines the application of the Better Business Case Green Book model by practitioners when seeking to secure past place-based economic development funding. The business case framework is used to appraise and manage the development of an intervention, as set out in the HM Treasury’s Green Book guidance (HM Treasury, 2022). A business case brings together and summarises the results of all necessary research and analysis required to support decision-making in a transparent manner (Pugh, 2024.b).</p> <p>This report systematically reviews and analyses evidence within 134 business cases developed by sub-national institutions submitted to 3 place-based economic development funds. Drawing on HM Treasury’s Green Book guidance, the report evaluates the quality of business case construction and appraisal, particularly in relation to the development of specific, measurable, achievable, realistic, time-sensitive (SMART) objectives, place-based value-for-money assessments, and systemic biases in funding methodologies.</p> <p><a href="#">Link to publication</a></p>
<b>Report</b>	<b>Community Empowerment and Living Heritage in 2026: Community-Owned Culture and Heritage in Local Growth Plans</b>
<b>Author</b>	<b>Liam Smyth, <i>UK National Commission for UNESCO and LPIP Hub Fellow</i></b>
	<p>This briefing paper was written at the advent of the UNESCO 2003 Convention for the Safeguarding of Intangible Cultural Heritage, and the English Devolution and Community Empowerment Bill coming into action in the UK. The paper provides an initial provocation as to whether 2026 could provide the strongest mandate yet for valuing community culture and heritage as a necessary precondition for local growth agendas in England.</p> <p><a href="#">Link to publication</a></p>

## LPIPs Publications

<b>Report</b>	<b>Perceptions of Growth in two Welsh Market Towns</b>
<b>Author</b>	<b>Cymru Wledig LPIP</b>
	<p>The aim of this research was to identify how growth, in terms of business and community development, is perceived by those living and working in rural towns in Wales. Case studies of Llanidloes (Mid Wales) and Llangefni (North Wales) were used to explore perceptions of growth and how enterprise can be supported in these locations, through a better understanding of what growth and development means to those living there.</p> <p><a href="#">Link to publication</a></p>
<b>Briefing</b>	<b>Understanding Growth from a Rural Perspective</b>
<b>Author</b>	<b>Cymru Wledig LPIP</b>
	<p>This research aimed to identify how growth in terms of business and community development is perceived by people who live and work in rural towns in Wales. Two case studies were used: Llanidloes (Powys) and Llangefni (Anglesey). Overall, small businesses and communities saw growth as moving forward or improving. This perception of growth existed in tension with perceived risks of decline. Participants saw growth as a community endeavour rather than something to pursue for individual benefits and connected it to town prosperity. There was very limited support for an approach where growth means increase and expansion, such as increased profits or population. Only a few policymakers saw growth this way. Instead, the focus was primarily community-building for prosperous, cohesive and resilient communities and long-term sustainability, which works well within the framework of the Wellbeing of Future Generations Act.</p> <p><a href="#">Link to publication</a></p>
<b>Briefing</b>	<b>Next Steps for Women in Farming Diversification in Wales</b>
<b>Author</b>	<b>Cymru Wledig LPIP</b>
	<p>Farming diversification is recognised as an economic necessity for farms. In Wales, diversification has received some much-needed cross-party attention, with recommendations focused on policy adjustments to encourage rural economic growth (Cross-Party Group for Rural Growth 2024). Yet women's contribution to farming and farm diversification is not fully valued and documented. The aim of this policy brief is to provide research evidence that can show women's contribution to farm diversification in Wales.</p> <p>Based on literature reviews and interviews (30), it establishes 4 recommendations to improve the outcomes for women, through economic, environmental, social and cultural and personal pathways. These are: Policy and resource that can provide business advice tailored to women and farming; rural development policy that supports future opportunities for women; diversification policy that addresses the challenges for women and recognises women's contributions; and diversification support that can build on and learn from what already works. These co-created recommendations have been confirmed with women in farming diversification so that the findings can be confidently applied in policy.</p> <p><a href="#">Link to publication</a></p>
<b>Blog</b>	<b>Good Work: Evidence and Policy Review</b>
<b>Author</b>	<b>YPIP</b>

Our colleagues Rich Crisp, Belen Martinez, and Sarah Molton from Sheffield Hallam University, and Alex Nunn from University of Manchester have produced an evidence and policy review for their ‘Good Work and Better Business’ work package.

This evidence and policy review explores what ‘Good Work’ means, why it matters to individuals, businesses and society, and how it is distributed across Yorkshire and the Humber.

The review brings together academic research, government data, and policy insights to examine opportunities and barriers to good work, and the policy levers that exist locally to promote good work.

[Link to publication](#)

<b>Blog</b>	<b>Reflections from YPIP: prioritising the needs and priorities of partners and communities (and why it’s worth it)</b>
<b>Author</b>	<b>YPIP</b>
	This blog looks at the challenges in co-desinging and delivering a project to help create a more ‘inclusive and sustainable economy’. Sharing their learnings from this research project undertaken by the YPIP.
	<a href="#">Link to publication</a>



## External Publications

This section sets out recently released report and research, relevant to the work of the LPIP Hub, LPIPs and partners.

<b>Report</b>	<b>Local Decline and Populism</b>
<b>Author</b>	<b>University of Warwick</b>
<b>Published</b>	<b>July 2025</b>
	<p>In this paper, the researchers contribute to filling this gap in two ways. First, they gather novel data on a particularly visible form of local decline, high-street vacancies, that comprise 83,000 premises in England and Wales. Second, they investigate the influence of local decline on support for the right-wing populist UK Independence Party (UKIP) between 2009 and 2019</p> <p><a href="#">Link to Publication</a></p>

<b>Report</b>	<b>Healthy Places, Inclusive Growth: Realising the potential of devolution</b>
<b>Author</b>	<b>Growth and Reform Network</b>
<b>Published</b>	<b>August 2025</b>
	<p>This policy report focuses on the role of national government in creating the systemic conditions for integrating health and economic development at place level. It draws on new insight from a comprehensive evidence review of 144 studies from high-income countries on how socioeconomic policies shape health outcomes. The evidence review is published alongside this paper.</p> <p><a href="#">Link to Publication</a></p>

<b>Report</b>	<b>A Nation of Neighbours: Rebuilding Britain from the Ground Up</b>
<b>Author</b>	<b>DEMOS</b>
<b>Published</b>	<b>September 2025</b>
	<p>This is the first report of Nation of Neighbours – a year-long programme led by cross-party think tank Demos and the UCL Policy Lab, supported by Lloyds Bank Foundation.</p> <p>Co-created with civil society, it will set out a fresh narrative for national renewal – showing how trusted community organisations, rooted in people’s lives, hold the key to reconnecting citizens and driving renewal.</p> <p><a href="#">Link to Publication</a></p>

<b>Report</b>	<b>Impactful Devolution 03: A toolkit for regional growth and industrial strategy</b>
<b>Author</b>	<b>Future Governance Forum</b>
<b>Published</b>	<b>September 2025</b>
	<p>If the government’s Modern Industrial Strategy is to succeed, it will need to maximise the UK’s economic growth potential in a highly uncertain and rapidly changing global context, while at the same time ensuring that this growth comes from – and is felt in – all parts of an increasingly divided country. Getting that right is both politically and economically essential.</p> <p>Impactful Devolution 03: A toolkit for regional growth and industrial strategy takes a deeply practical look at how the government can rise to that challenge.</p> <p><a href="#">Link to Publication</a></p>

<b>Report</b>	<b>Understanding Communities: Final Report</b>
---------------	--

<b>Author</b>	<b>The British Academy</b>
<b>Published</b>	<b>September 2025</b>
	<p>Understanding Communities was a joint research programme of the British Academy and Nuffield Foundation with the aim to increase understanding of how communities' function and how they can improve people's lives.</p> <p>Six projects were funded, all of which focused on research which would generate findings for making a practical difference and address the absence of lived experience in the current evidence base.</p> <p>This report has brought together findings from across these projects under four thematic chapters, which discuss the potential ways in which we can shape and improve the future resilience of communities.</p> <p><a href="#">Link to Publication</a></p>
<b>Report</b>	<b>New Marjon research uncovers faulty government measurement of "Pretty Poverty" in Cornwall's rural communities</b>
<b>Author</b>	<b>Plymouth Marjon University</b>
<b>Published</b>	<b>September 2025</b>
	<p>The Pretty Poverty Report: Cornwall Rurality Matters, produced in partnership with the Diocese of Truro, challenges the government's Index of Multiple Deprivation (IMD) and its failure to measure rural hardship accurately.</p> <p><a href="#">Link to Publication</a></p>
<b>Report</b>	<b>Reorganising district councils and local public services: options and challenges</b>
<b>Author</b>	<b>Institute for Government</b>
<b>Published</b>	<b>September 2025</b>
	<p>This report highlights potential risks and opportunities for local government as leaders embed these new authorities and transform local public services.</p> <p><a href="#">Link to Publication</a></p>
<b>Report</b>	<b>Inclusive Growth in the West Midlands: An Evidence Informed Approach</b>
<b>Author</b>	<b>West Midlands Combined Authority</b>
<b>Published</b>	<b>September 2025</b>
	<p>This report provides essential guidance for policymakers and practitioners across the West Midlands 'system', enabling a collective effort to achieve inclusive and sustainable economic growth. By grounding our approach in robust qualitative and quantitative evidence, we can better understand the complex factors that drive prosperity and wellbeing for all our residents, across every city, town, and village.</p> <p>This report outlines the key enablers and tensions influencing each of our eight inclusive growth fundamentals, offering an analysis of the specific challenges unique to our region. It also highlights the interconnections between these fundamentals, identifying opportunities for collaboration and innovative action across sectors and communities.</p> <p><a href="#">Link to Publication</a></p>
<b>Report</b>	<b>New Values, New Landscape Public contracts for social prosperity 2025 update</b>
<b>Author</b>	<b>Localis</b>
<b>Published</b>	<b>October 2025</b>

In October 2024 Localis launched [New Values: Public Contracts for Social Prosperity](#) with Norse Group. It is an in depth look into how local authorities can work towards strategic, locally beneficial procurement by adopting a blended approach and using hybrid models to deliver gains in efficiency, productivity and social value.

A year later much has changed in this evolving policy arena. Starting last December with publication of the English Devolution White Paper – and this July with the arrival of the long-awaited English Devolution and Community Empowerment Bill, and in light of the launch of a new consultation on public procurement from the Cabinet Office, we are looking back at New Values and assessing how the argument, narrative and recommendations have been impacted by the spate of reforms announced in the months since its release.

[Link to Publication](#)

<b>Report</b>	<b>Ride the Wave: Balancing investment risk and opportunity to guide urban renewal</b>
<b>Author</b>	<b>Localis</b>
<b>Published</b>	<b>October 2025</b>
	Ride the Wave examines the framework for local investment aimed at driving urban renewal and economic growth in the United Kingdom. The analysis centres on how local authorities can navigate investment risks and opportunities within a changing policy landscape characterized by a new emphasis on city-regions, empowered mayoral authorities, and a reliance on private finance.
	<a href="#">Link to Publication</a>

<b>Report</b>	<b>Rural futures: The British countryside and its potential</b>
<b>Author</b>	<b>October 2025</b>
<b>Published</b>	<b>Fabian Society</b>
	This pamphlet brings together rural MPs with a variety of experts and policymakers to explore the future of our countryside. As the authors set out, the potential of Britain’s rural areas is immense. By seeing rural areas as an social and economic asset, the government can realise this promise while protecting our countryside – and benefit communities across the country as a result.
	<a href="#">Link to Publication</a>

<b>Report</b>	<b>Scottish Social Attitudes   25 years of devolution in Scotland: Public attitudes and reactions</b>
<b>Author</b>	<b>National Centre for Social Research</b>
<b>Published</b>	<b>October 2025</b>
	This briefing charts some of the key developments in Scottish public opinion since the advent of devolution.
	<a href="#">Link to Publication</a>

<b>Report</b>	<b>How productive are the UK’s big cities?</b>
<b>Author</b>	<b>Centre for Cities</b>
<b>Published</b>	<b>October 2025</b>
	This briefing dives into the latest subregional productivity data to understand the trends over the past 20 years and what it can tell us about local and national economic performance.
	<a href="#">Link to Publication</a>

<b>Report</b>	<b>Ending extraction in the UK care system</b>
<b>Author</b>	<b>Co-Operatives UK, CLES, New Economics Foundation and Centre for Thriving Places</b>
<b>Published</b>	<b>November 2025</b>
	<p>This report outlines how our care system facilitates the extraction of value and wealth from places and local public service budgets, and explores what our communities, local and strategic authorities, and national governments can do about it.</p> <p><a href="#">Link to Publication</a></p>
<b>Report</b>	<b>Essay: Affordable infrastructure</b>
<b>Author</b>	<b>CLES</b>
<b>Published</b>	<b>November 2025</b>
	<p>This essay was written by the Centre for Local Economic Strategies and The King's Fund, as part of a programme of work commissioned by The Health Foundation.</p> <p>This essay draws on conversations with mayors and SA officers to highlight how innovative housing and transport policies like municipal housebuilding and bus franchising can be scaled and amplified to achieve greater impact on narrowing health inequalities.</p> <p><a href="#">Link to Publication</a></p>
<b>Report</b>	<b>The impact of good employment on productivity and profitability in Greater Manchester</b>
<b>Author</b>	<b>CLES</b>
<b>Published</b>	<b>November 2025</b>
	<p>This report examines the financial impacts of adopting good employment practices among Greater Manchester businesses affiliated with the Good Employment Charter.</p> <p><a href="#">Link to Publication</a></p>

## Place-Cast Episodes

PlaceCast is a [Local Policy Innovation Partnership \(LPIP\) Hub](#) production based at City-REDI, University of Birmingham. Our new podcast is essential listening for those keen to explore the ins and outs of knowledge mobilisation for influence in central and local government, based on the view that it's only through animating the power of place-based leadership that the wicked problems of 2025 can become more manageable.

<b>Podcast</b>	<b>Placecast Podcast – Episode Seven – Rethinking Public Funding and Place-Based Governance in England</b>
<b>Speakers</b>	<b>Nicola Headlam, Charlotte Hoole and Andy Pike</b>
<b>25<sup>th</sup> September</b>	<p>In this episode of Placecast, Nicola Headlam sits down with Dr Charlotte Hoole and Professor Andy Pike for a deep dive into one of the most pressing challenges facing England today: how we allocate public funding and govern economic development across regions. Drawing on extensive experience in subnational governance and policy research, Charlotte and Andy offer sharp insights and grounded expertise in a conversation that's both timely and urgent.</p> <p><a href="#">Register here</a></p>
<b>Podcast</b>	<b>Placecast Podcast – Episode Eight – Dream Before You Think: Unlocking Civic Imagination for Social Change</b>
<b>Speakers</b>	<b>Nicola Headlam and Mark Swift</b>
	<p>Episode Eight of the Placecast Podcast dives deep into the power of place-based leadership and social entrepreneurship with guest Mark Swift, a social entrepreneur with over 15 years' experience in health and care. Hosted by Nicola Headlam, the conversation explores how community-centred approaches can transform health outcomes, reduce demand on public services, and reconfigure system architecture for a more inclusive future. Mark shares his journey from NHS public health specialist to founding Wellbeing Enterprises, his lived experience shaping his mission, and his vision for civic imagination as a driver of social change.</p> <p><a href="#">Register here</a></p>

## Events

Webinar	<b>Ending Extraction in the UK Care System: What Local Authorities Can Do</b>
2 <sup>nd</sup> <b>December</b> <b>3 – 4:30pm</b>	<p>Local Authorities spend 70% of annual budgets on care services. Yet not all that investment is channelled into high quality jobs or comprehensive care nor kept in our local economies. Our new analysis (<a href="#">Ending Care Extraction in the UK</a>) has found that private companies operating care services in just three regions of England have taken more than £250m in profits in three years and over of third of those companies are owned by private equity companies or companies based in tax havens (or both).</p> <p>The publication reveals the scale of this challenge and outlines how public money is being siphoned out of the care system rather than reinvested to improve services, and how care workers and our communities are affected. But it also highlights that a better way is possible. Local authorities can play a crucial role in driving care systems change to prioritise people and places rather than private profit through reforming commissioning practices.</p> <p><a href="#">Register here</a></p>
Webinar	<b>Local Government Reorganisation: a catalyst for local cultural renaissance</b>
9 <sup>th</sup> December <b>2 – 3:30pm</b>	<p>Join us for a dynamic and thought-provoking session exploring how local government reorganisation will reshape the landscape for cultural services. Hosted by the National Alliance for Cultural Services in partnership with the Local Policy Innovation Partnership Hub, this webinar will spotlight the opportunities and challenges facing cultural provision and how strategic leaders can navigate through them.</p> <p><a href="#">Register here</a></p>
Webinar	<b>CCPN Dialogues #4: Why are we talking about the cultural commons?</b>
Wed, 17 Dec <b>12:00 –</b> <b>1:00pm</b>	<p>This talk aims to retrace the trajectory of the evolution of the idea of commons, with a particular focus on how the concept of cultural commons was first generated in relation to the broader ideas of knowledge, intellectual property, creativity and cooperation in the last 50 years.</p> <p><a href="#">Register here</a></p>
Webinar	<b>Up Close and Policy: Spatial Inequalities and Place-Based Solutions</b>
20 <sup>th</sup> January <b>1:00 –</b> <b>2:00pm</b>	<p>Reimagining place-based policy with local lessons for global impact with UCL, North East Combined Authority and the OECD.</p> <p><a href="#">Register here</a></p>

Disclaimer: The contents of this document are based on the latest data available and the contribution of partners in a fast-paced environment, therefore we urge caution in its use and application

For any queries, please contact the lead Authors:

Alice Pugh [A.Pugh@Bham.ac.uk](mailto:A.Pugh@Bham.ac.uk)

Abigail Taylor [A.Taylor.7@bham.ac.uk](mailto:A.Taylor.7@bham.ac.uk)

Rebecca Riley [R.Riley@Bham.ac.uk](mailto:R.Riley@Bham.ac.uk)

Anne Green [A.E.Green.1@bham.ac.uk](mailto:A.E.Green.1@bham.ac.uk)



The Local Policy Innovation Partnership Hub is funded by the UKRI

